

SPRINGING... INTO ACTION!

Bringing Bunches of Bargains 2 U 'til June 30th, 2012

\$29⁹⁵



Cross Table Base

- Constructed of heavy 18 gauge steel tubes and cast iron, powder coated in premium black wrinkle finish
- Labor saver column and spider
- Includes non-marring, adjustable black levelers
- Recommended to use one size larger base for bar height applications

B22STD Standard 22" x 22" 3" Column



\$52⁵⁰



Metal Frame Dining Chair

- Premium black powder coat wrinkle finish
- 16 gauge, 1 1/2" steel tubing
- Totally welded frame
- Non-marring poly glides
- Seats ship unattached, simple seat attachment is required
- 17"D x 18"W seat, 16.134" seat height

SL2160 32 3/4"H x 16 1/2"W



ARR Quick Ship Table Top

- 1" thick, 45 lb. industrial grade particle board
- Thermally fused melamine on either side
- Edged with high quality extruded rubber t-mold
- 3" radius corners
- All tops ship separately
- Tops shipping from California are Carb Phase I compliant

MB24R Black T-Mold Edge 24" dia. Mahogany/Black

\$23⁵⁰



Bucket Series Barstool

- Quality fabric backed commercial grade vinyl
- Plywood seat core
- Black bucket seat/standard black frame
- 4° swivel
- Metal ball bearings
- Non-marring poly glides
- Seats ship unattached - simple seat attachment required

SL2133BLK 44"H 16"D x 18"W x 19"H Seat

\$77⁹⁵



"The oven brand of choice among professional chefs worldwide"

- >> **ADAPTIVE.Clima**
- >> **DRY.Maxi™**
- >> **STEAM.Maxi™**
- >> **AIR.Maxi™**
- >> **Protek.SAFE™**

ChefTop™

BakerTop™



"Enhance your cooking experience through UNOX innovative technology"

Call your NISSCO Dealer today for your FREE I.C.E. (Individual Cooking Experience) or product demonstration event to be conducted by UNOX Certified Chefs - "at your restaurant operation"!

www.unox.com



Sandwich Units

- Unique air flow distribution allows pan product to maintain 33°F to 41°F
- Units comply with the 98 NSF Standard for preparation units
- Utilizes environmentally safe R-134A refrigerant
- Units feature 2" non-CFC polyurethane foam insulation, spring-loaded, self-closing doors, magnetic snap-in door gaskets, adjustable 5" casters, heavy-duty, epoxy-coated steel shelves, interior hanging thermometers, insulated lids and non-recessed pans
- Certified under NSF-7 to maintain temperatures in 86°F ambient and designed to maintain NSF-7 temperatures in 100°F ambient
- Stainless steel fronts and tops, aluminum end panels, case backs and interiors
- Full width 12" nylon cutting board included on Standard Top units, 10" deep cutting boards on Mighty Top units (those with M at the end of model number)
- 1/6 size x 4" deep pans included
- NSF, CE, ETL

1 Door

SW27-8	8 Pan Capacity	27 1/2"W x 30"D x 43"H	\$1,595
SW27-12M	12 Pan Capacity	27 1/2"W x 34"D x 43"H	\$1,895
SW32-8	8 Pan Capacity	32"W x 30"D x 43"H	\$1,895
SW32-12M	12 Pan Capacity	32"W x 34"D x 43"H	\$2,190

2 Doors

SW36-10	10 Pan Capacity	36"W x 30"D x 43"H	\$2,175
SW36-15M	15 Pan Capacity	36"W x 34"D x 43"H	\$2,495
SW48-12	12 Pan Capacity	48"W x 30"D x 43"H	\$2,425
SW48-18M	18 Pan Capacity	48"W x 34"D x 43"H	\$2,675
SW60-16	16 Pan Capacity	60"W x 30"D x 43"H	\$2,495
SW60-24M	24 Pan Capacity	60"W x 34"D x 43"H	\$2,950

3 Doors

SW72-18	18 Pan Capacity	72"W x 30"D x 43"H	\$2,850
SW72-30M	30 Pan Capacity	72"W x 34"D x 43"H	\$3,425



\$115⁰⁰

Bus Cart

- Three-tier stainless steel design
- 15 1/2" x 24" edge shelves
- 300 lb. capacity

BC-2415SS 27"L x 15 1/2"W x 32"H



Measuring Cups

- Built of virtually unbreakable polycarbonate featuring easy-read outer measurements
- Stackable, one-piece construction
- Full set includes one of each

MEA-25PC	1 Cup	\$1.99
MEA-50PC	1 Pint	\$2.59
MEA-100PC	1 Quart	\$3.99
MEA-200PC	2 Quart	\$6.99
MEA-400PC	4 Quart	\$10.49
MEA-PC-SET	Full Set	\$24.99



Neoprene Oven Mitts

- Offers heat protection up to 500°F
- Non-slip, sanitary, stain and water resistant
- Easy to clean with warm water

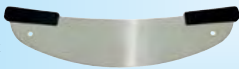
NEP-13	13"L	\$12.99
NEP-15	15"L	\$13.99
NEP-17	17"L	\$14.99

Pizza Rocker Knife

- Beveled stainless steel with black polypropylene offset handles
- Dual hanging holes in blade for safe storage

PRK-20 20" Blade

\$24⁹⁹



EZ-Stor Folding Chafer

- Mirror polish chafer with folding stand
- Features built-in lid holder and plastic top handle
- Ideal for space saving storage and transporting
- Full size - 8 qt.

ESFC-21 22 1/2"L x 13 1/2"W x 11 1/2"H **\$38.75**



Iced Tea Dispenser

- Stainless steel iced tea dispenser features an attractive satin finish with black faucet and lid
- Simple to maintain and easy to clean
- Dripless Tomlinson faucet helps keep your serving station clean
- Ice core center keeps the tea cold

ITD-3G 3 gal.

\$58⁵⁰

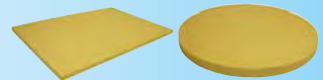


Space-Saver Iced Tea Dispenser

- Features a narrow body, recessed rear handle and removable drip tray
- Fits under most commercial brewers for direct brewing into dispenser

ITDS-5G 5 gal.

\$99⁹⁵



Cutting Boards

- Synthetic rubber cutting boards
- NSF listed

Rectangular		
CBR-1218	12" x 18" x 1/2"	\$31.50
CBR-1218H	12" x 18" x 1"	\$57.50
CBR-1520	15" x 20" x 1/2"	\$37.50
CBR-1824	18" x 24" x 1/2"	\$59.95
Round		
CBR-14R	14" dia. x 3/4"	\$34.25
CBR-14RH	14" dia. x 1"	\$47.50
CBR-16R	16" dia. x 3/4"	\$48.50
CBR-16RH	16" dia. x 1"	\$57.75



Bowl Cutters

- Cutlery grade, twin stainless steel knives
- BC14 makes 3,500 cuts per minute, BC18 make 3,760 cuts per minute
- The stainless steel bowl revolves, and the more the product passes the knives, the finer the cut
- BC18 features a built-in #12 PTO hub and removable, reversible cutting board
- **BC14:** 18"W x 27"L x 16"H; **BC18:** 23 1/2"W x 34 1/2"L x 20"H
- 115/60/1, NSF, ETL

BC14	14" dia. Bowl	1/2 hp	24 rpm	\$3,229
BC18	18" dia. Bowl	1 hp	22 rpm	\$4,925



Duro™ Manual Gravity-Feed Slicers

- Heavy-duty, belt driven, manual, gravity-feed slicers
- German, hollow ground hardened steel, high carbon chrome plated blades
- Built-in sharpeners
- Polished anodized aluminum finishes
- 115/60/1, CSA, NSF, UL

7510	10" dia. Blade	1/3 hp	\$1,729
7512	12" dia. Blade	1/3 hp	\$1,875



PrepSaver™ Manual Gravity-Feed Slicers

- Compact light to medium duty, belt-driven, manual gravity-feed slicers
- German hollow-ground hardened steel high carbon chrome plated blades
- Permanent edge guards
- Built-in sharpeners
- Polished anodized aluminum finishes
- 115/60/1, CSA, NSF, ETL

4509	9" Blade	1/4 hp	\$809.00
4510	10" Blade	1/4 hp	\$859.00
4512	12" Blade	1/3 hp	\$989.00



Mundial® Cutlery

- Non-slip ergonomic, molded polypropylene handles
 - Anti-microbial protection is also built into the handles (available in Black, Blue, Green, Red, Yellow or White)
- | | | | |
|--------------------|-------------------------------------|-----|----------------|
| 5601-3 1/4" | 3 1/2" Paring Knife (Chef's Style) | ea. | \$3.75 |
| 5607-6 | 6" Boning Knife (Curved Semi-Stiff) | ea. | \$8.95 |
| 5604-7GE | 7" Santoku (Granton Edge) | ea. | \$19.95 |
| 5620-9E | 9" Offset Sandwich Knife | ea. | \$11.50 |
| 5610-8 | 8" Cook's Knife | ea. | \$15.50 |
| 5610-10 | 10" Cook's Knife | ea. | \$18.95 |
| 5627-10E | 10" Slicer (Wavy Edge) | ea. | \$11.50 |

Bosa Nova Flatware

- Premium 18/0 flatware
 - Heavyweight machine-finished pattern
 - Sold by the dozen
- | | | |
|--------------|---------------------|----------------|
| 1801 | Teaspoon | \$13.75 |
| 1807 | Dessert Spoon | \$18.25 |
| 1806 | Salad Fork | \$14.95 |
| 1805 | Dinner Fork | \$18.95 |
| 1845 | Dinner Knife, 1-Pc. | \$36.95 |
| 18051 | European Fork | \$27.95 |



Balance Flatware

- European rim style
 - 18/0 chrome
 - Sold by the dozen
- | | | |
|--------------|----------------|----------------|
| 7901 | Teaspoon | \$13.95 |
| 7907 | Dessert Spoon | \$22.50 |
| 7906 | Salad Fork | \$14.50 |
| 7905 | Dinner Fork | \$22.50 |
| 7945 | Knife, 1-Pc. | \$34.50 |
| 79051 | European Fork | \$25.50 |
| 79451 | European Knife | \$36.50 |



Steak Knife

- Jumbo steak knife with polypropylene handle
- 620527** 5" Blade

\$23⁵⁰
Per Dozen



Poise Flatware

- Medium weight 18/0
 - Sold by the dozen
- | | | |
|-------------|---------------------|----------------|
| 5501 | Teaspoon | \$6.75 |
| 5507 | Dessert Spoon | \$10.50 |
| 5506 | Salad Fork | \$9.95 |
| 5505 | Dinner Fork | \$10.50 |
| 5545 | Dinner Knife, 1-Pc. | \$17.95 |



Illustra™ Flatware

- Deluxe 18% chrome, 10% nickel flatware with traditional fiddleback design
 - Sold by the dozen
- | | | |
|--------------|----------------|----------------|
| 9101 | Teaspoon | \$17.50 |
| 9107 | Dessert Spoon | \$26.50 |
| 9106 | Salad Fork | \$19.95 |
| 9105 | Dinner Fork | \$26.50 |
| 9145 | Knife, 1-Pc. | \$34.95 |
| 91051 | European Fork | \$29.95 |
| 91451 | European Knife | \$39.95 |



Heavy-Duty Commercial Toasters

- Replaceable industrial heating plates
- Electronic browning controls
- Carriage control lift levers
- Limited one year warranty
- NSF, UL, CUL (WCT805), ETL (WCT800)
- Four 1 1/8" toast slots



\$315⁰⁰

- | | | |
|-----------------|-----------------|----------------------------|
| WCT800 | 300 Slices/Hour | 120V, 50/60 Hz, 2200W, 19A |
| WCT805 | 380 Slices/Hour | 240V, 50/60 Hz, 2700W, 12A |
| WCT805B | 380 Slices/Hour | 208V, 50/60 Hz, 2700W, 13A |
| WCT800RC | 240 Slices/Hour | 120V, 50/60 Hz, 2200W, 15A |

All Toasters:
Your Choice
\$339⁰⁰

Combination Bread & Bagel Toasters

- Easily replaceable industrial heating plates
- Electronic browning controls
- Carriage control lift levers
- Limited one year warranty
- NSF, UL, CUL (WCT815), ETL (WCT810)
- Two 1 1/8" regular toast slots, two 1 1/8" extra-wide slots



- | | | |
|----------------|-----------------|----------------------------|
| WCT810 | 380 Slices/Hour | 120V, 50/60 Hz, 2025W, 17A |
| WCT815 | 380 Slices/Hour | 240V, 50/60 Hz, 2025W, 9A |
| WCT815B | 380 Slices/Hour | 208V, 50/60 Hz, 2025W, 10A |

\$79⁰⁰

Margarita Madness® Blenders

- High performance 2 hp, two-speed motors
 - 48 oz. capacity unbreakable containers
 - Pulverizes ice in seconds
 - Limited one year warranty
- | | | |
|---------------|---|-----------------|
| MMB150 | Membrane Keypad | \$249.00 |
| MMB160 | Hi, Lo, Stop, & Pulse w/60 Second Timer | \$259.00 |



Elite Series

- | | | |
|---------------|---------------------------------------|-----------------|
| MMB145 | Hi, Lo, Off, & Pulse, Toggle Switches | \$249.00 |
|---------------|---------------------------------------|-----------------|



\$575⁰⁰

Citrus Juicer

- Quiet, heavy-duty direct drive motor
 - Stainless steel juice collector with large spout
 - Sturdy polycarbonate motor housing with vibration-dampening feet
 - Universal reamer juices all citrus fruits
- JC4000** 2 1/2 qt. 120V, 60 Hz UL 1800 rpm

Citrus Bar Juicer

- Heavy-duty die-cast base mounted on vibration-dampening feet
 - Universal reamer thoroughly juices all types of citrus fruits
 - Juice bowl and reamer are dishwasher safe
 - Includes quart serving container for easy storage and distribution
 - Limited one year warranty
- BJ120C** Up to 120 Oranges/Hour 120V, 50/60Hz UL



Juice Extractor

- Rapidly converts fruits and vegetables into rich pulp-free juice
 - Floating action stainless steel blade speeds up juice flow with faster distribution of pulp
 - Stainless steel extraction basket
 - Polycarbonate motor housing
 - Stainless steel bowl and cover
- 6001C** 120V, 60Hz CSA, UL

\$159⁰⁰



Quik Stik™ Immersion Blender

- Hi/Lo speeds assure desired results
 - Accomplishes tasks with ease from light mixtures that require low speed to pureeing, emulsifying and whipping at high speed
 - Lightweight, compact and comfortable to operate
 - All purpose removable stainless steel blade
 - Includes 6' cord with three-prong plug
- WSB33** 120V/60, 100W cULus, NSF



Quik Stik™ Plus Medium-Duty Immersion Blender

- 1/2 hp, 350 watt, two-speed heavy-duty motor
 - Rubberized comfort grip
 - All-purpose stainless steel blade
 - 10" fixed shaft
 - One year limited warranty
- WSB40** 6 gal. ETL NSF



\$169⁰⁰



Big Stix™ Immersion Blenders

- 1 hp motor, 750 watts, 18,000 rpm
- Variable speed heavy-duty motor
- Rubberized comfort grip and second handle for controlled operation
- Stainless steel shafts are completely sealed and dishwasher safe
- One year limited warranty, ETL NSF

- | | | |
|--------------|-----------|-----------------|
| WSB50 | 12" Shaft | \$309.00 |
| WSB55 | 14" Shaft | \$375.00 |
| WSB60 | 16" Shaft | \$449.00 |
| WSB65 | 18" Shaft | \$509.00 |
| WSB70 | 21" Shaft | \$589.00 |



\$1,829

ECCO One Oil Filter System

- Compact design
- For smaller drain type fryers
- All metal parts are either stainless or nickel plated steel
- Equipped with heavy-duty switch, oil proof lead wire cord and 3-prong grounding plug
- Thermal and torque overload protection also provided
- Standard accessories: 50 filter paper envelopes, 25 individual packets of filter powder, stainless steel container cover
- 110-115VAC, 1/2 hp, 8.8-7.4A, 60Hz, 1.0 SF, ETL, NSF

ECCOONE 65 lb., 22"W x 17 1/2"D x 22 1/2"H

Filtrators

- All Filtrator filters are completely self contained - cart, container and power combined into one compact portable unit
- All metal parts are either stainless or nickel plated steel
- 15 1/2" x 15 1/2" square screen can be used with either a cloth filter for heavy sediment conditions or a paper envelope for light sediment conditions
- Includes oil-proof lead wire cord and molded 3-prong grounding plug
- Thermal and torque overload protection also provided
- Paper envelope filter
- 110-115 VAC, 60 Hz, 8.8-7.4A, 1.0 SF
- 1/2 hp motor, CE, CSA, ETL, NSF

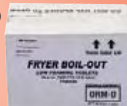
HF 080P 80 lb. **\$1,925**

16 1/2"W x 27"H x 26 1/2"L

HF 130P 130 lb. **\$1,999**

19 1/2"W x 27"H x 30 1/2"L

\$85⁰⁰



Filter Envelopes

FE02 100 ct. 14" x 18" Box **\$85.00**

- For use with Hunter (pre 1991) and Ecco One models)

FE09 100 ct. 17 1/2" x 18 1/2" Box **\$111.00**

- For RF Hunter Portable Oil Filtration System
- For 80, 135 and 165 lb. capacities
- Use with HF models post 1991

Filter Powder

FP22D 3.2 oz. Packs 25/cs. **\$35.00**

FP22 22 lb. Bulk Box ea. **\$85.00**



Your Choice
\$59⁵⁰



Plate Mount Caster Kits

- Grease resistant polyurethane wheels for equipment
- Kits contain two casters with brakes, two casters without brakes and 16 mounting screws

264705 3" Wheels 1,000 lb. Capacity

264704 5" Wheels 1,000 lb. Capacity



Expanding Stem Caster Sets

- Grease resistant polyurethane wheels
- Kits contain two casters with brakes and two casters without brakes

For Shelving Units

264707 3" Wheels For 1" dia. Tubing 1,000 lb. Capacity **\$53.50**

264706 5" Wheels For 1" dia. Tubing 1,000 lb. Capacity **\$57.50**

For Work Tables & Equipment Stands

264709 3" Wheels For 1 1/2" dia. Tubing 1,000 lb. Capacity **\$55.95**

264708 5" Wheels For 1 1/2" dia. Tubing 1,000 lb. Capacity **\$59.50**

Ultimate Restaurant Ranges

- Commercial gas ranges
- 6" adjustable legs standard (shown with optional casters)
- 4" stainless steel front rail, stainless steel front and sides
- Front located manual gas shut-off to entire range
- Factory installed regulator
- Patented, one-piece, lifetime clog-free, cast iron burners
- Ovens with thermostat range of 175°F to 550°F
- Porcelain enamel interiors

4361D 6 Burners & 1 Standard Oven **\$2,250**

4601DD 10 Burners & 2 Standard Ovens **\$3,995**



New 72" Ultimate Restaurant Ranges

- Commercial gas ranges with 37"H cooking tops
- 4" stainless steel front rails, stainless steel fronts and sides
- 6" adjustable legs standard (shown with optional casters)
- Two front-located, manual gas shut-off valves for each side of the ranges
- Factory installed regulators
- Cast iron grate tops will hold a 14" stock pot
- Standing pilot for open top burners
- Battery spark ignition for oven bases
- 10 patented, one-piece, lifetime clog-free, cast iron burners
- 33,000 BTU NAT
- One year No Quibble, 24/7 parts and labor warranty

4721DD Standard Oven Model **\$4,625**

4721AA Convection Oven Model **\$8,395**



Gas Convection Ovens

- Standard controls include a 140°F to 500°F solid state thermostat and 60 minute mechanical cook timer
- 72,000 BTU per oven cavity
- Patented "plug-in, plug-out" control panel; easy-to-service
- 26" stainless steel, triangular legs standard (shown with optional casters)
- Stainless steel front, top and sides
- Aluminized steel backing
- Dependent doors with windows
- Coved, fastener-free, porcelain interior
- Soft Air, two speed, 1/2 hp, 1725/1140 rpm fan motor
- 11-position rack guides and five plated oven racks
- Electronic ignition with solid state temperature controls
- Furnished with 6' cord with three prong plug

SLGS12SC Single Deck 55 1/2"H **\$3,425**

SLGS22SC Double Deck 64 1/2"H **\$6,825**



TruVection Low Profile Gas Convection Ovens

- 52,000 BTU (NAT or LP) per deck
- Dependent doors with windows, oven interior light
- 6" stainless steel legs standard (shown with optional casters)
- Coved, porcelain interior
- Soft air, two-speed, 1/2 hp fan motor
- Five position rack guides and three plated oven racks
- Electronic ignition, oven "ready" light
- Cool down fan mode
- Standard controls: 150°F to 550°F solid state thermostat and 60 minute mechanical cook timer
- 29"W x 21 1/2"D x 14"H oven interiors

TVGS/12SC w/P36N-BBB Single Deck w/P36N-BBB **\$6,795**

TVGS/22SC Range Top **\$6,195**

TVGS/32SC Double Deck **\$9,275**



Electric Counter Steamers

- 304 stainless steel exterior, 316 stainless steel cooking chamber with coved corners
- Heavy gauge stainless steel door with full perimeter gasket
- Positive lock and seal mechanism with spring release door
- Ready indicator light and cooking indicator light
- Low water indicator light with audible alarm
- 60 minute electromechanical timer with end of cycle audible alarm
- Constant steam feature (R18-4 & R24-3 only)
- 380, 415, 440, 460, or 480 Volts, 3 Phase, 50 or 60 Hertz

Auto Fill/Manual Drain

R18-4 (8) 1"D Pans, (4) 2 1/2"D Pans, (2) 4"D Pans, (2) 6"D Pans **\$3,595**

29"W x 18 1/2"D x 26 1/4"H 9.0 kW

Auto Fill/Auto Drain

R24-3 (6) 1"D Pans, (3) 2 1/2"D Pans, (2) 4"D Pans, (1) 6"D Pans **\$4,175**

24"W x 29 1/2"D x 25 1/4"H 7.5 kW

Manual Fill/Manual Drain

EZ18-3 (6) 1"D Pans, (3) 2 1/2"D Pans, (2) 4"D Pans, (1) 6"D Pans **\$3,895**

29"W x 18 1/2"D x 23 1/4"H cCSAus, NSF



Top Notch® Food Pans & Accessories

- Clear polycarbonate food pans
- Resists food acids and oils; and temperatures of -40°F to 212°F
- Easy lift spoon notches at each end for easy removal from steamtable pans and recessed counters
- NSF listed and dishwasher safe

1020007	Full Size x 2 1/2"D	ea.	\$12.00
1020107	Full Size x 4"D	ea.	\$15.50
1020207	Full Size x 6"D	ea.	\$21.00
1020307	Full Size x 8"D	ea.	\$22.00
1022007	1/2 Size x 2 1/2"D	ea.	\$7.00
1022107	1/2 Size x 4"D	ea.	\$8.25
1022207	1/2 Size x 6"D	ea.	\$10.75
1022307	1/2 Size x 8"D	ea.	\$14.00
1024007	1/2 Size Long x 2 1/2"D	ea.	\$9.00
1024107	1/2 Size Long x 4"D	ea.	\$11.50
1026007	1/3 Size x 2 1/2"D	ea.	\$5.50
1026107	1/3 Size x 4"D	ea.	\$7.00
1026207	1/3 Size x 6"D	ea.	\$8.00
1026907	1/3 Size x 8"D	ea.	\$8.75
1032007	1/9 Size x 2 1/2"D	ea.	\$4.00
1032107	1/9 Size x 4"D	ea.	\$5.00
Drain Shelves			
1021507	Full Size	ea.	\$8.75
1023507	1/2 Size	ea.	\$4.50
1031507	1/6 Size	ea.	\$1.50
1033507	1/9 Size	ea.	\$1.25



Universal Flat Lids

10216U07	Full Size	ea.	\$8.75
10236U07	1/2 Size	ea.	\$5.00
10256U07	1/2 Size Long	ea.	\$6.75
10276U07	1/3 Size	ea.	\$3.50
10316U07	1/6 Size	ea.	\$2.50

Universal Flat Notched Lids

10217U07	Full Size	ea.	\$8.75
10257U07	1/2 Size Long	ea.	\$6.75
10277U07	1/3 Size	ea.	\$3.75
10317U07	1/6 Size	ea.	\$2.75
10337U07	1/9 Size	ea.	\$3.00

Universal Handled Lids

10250U07	1/2 Size Long	ea.	\$7.75
10270U07	1/3 Size	ea.	\$4.25

Handled Lids

10210	Full Size	ea.	\$10.00
10230	1/2 Size	ea.	\$5.75
10330	1/9 Size	ea.	\$3.50

Handled Notched Lids

10211	Full Size	ea.	\$10.25
10231	1/2 Size	ea.	\$6.00
10271	1/3 Size	ea.	\$4.50



Top Notch® High Heat Food Pans & Accessories

- Amber high heat pans that excel in high temperature applications ranging from -40°F to 375°F
- Easy Lift Spoon Notches at each end for easy removal from steam tables and recessed counters
- NSF listed and dishwasher safe

10400	Full Size x 2 1/2"D	ea.	\$28.00
10401	Full Size x 4"D	ea.	\$36.50
10420	1/2 Size x 2 1/2"D	ea.	\$16.75
10421	1/2 Size x 4"D	ea.	\$20.75
10422	1/2 Size x 6"D	ea.	\$26.00
10423	1/2 Size x 8"D	ea.	\$30.25
10440	1/2 Long x 2 1/2"D	ea.	\$21.50
10441	1/2 Long x 4"D	ea.	\$24.75
10460	1/3 Size x 2 1/2"D	ea.	\$12.50
10461	1/3 Size x 4"D	ea.	\$16.25
10462	1/3 Size x 6"D	ea.	\$22.00
10480	1/4 Size x 2 1/2"D	ea.	\$10.75
10481	1/4 Size x 4"D	ea.	\$13.50
10482	1/4 Size x 6"D	ea.	\$17.25
10500	1/6 Size x 2 1/2"D	ea.	\$8.50
10501	1/6 Size x 4"D	ea.	\$10.25
10502	1/6 Size x 6"D	ea.	\$12.50
10520	1/9 Size x 2 1/2"D	ea.	\$7.00
10521	1/9 Size x 4"D	ea.	\$8.00

Drain Shelves

10415	Full Size	ea.	\$18.50
10435	1/2 Size	ea.	\$9.00
10475	1/3 Size	ea.	\$6.75
10495	1/4 Size	ea.	\$6.75
10535	1/9 Size	ea.	\$2.25

Handled Notched Lids

10411	Full Size	ea.	\$25.00
10431	1/2 Size	ea.	\$12.75
10471	1/3 Size	ea.	\$9.75
10491	1/4 Size	ea.	\$7.75
10511	1/6 Size	ea.	\$6.75

Handled Lids

10430	1/2 Size	ea.	\$12.50
10450	1/2 Long	ea.	\$16.00
10470	1/3 Size	ea.	\$9.75
10490	1/4 Size	ea.	\$7.50
10510	1/6 Size	ea.	\$6.75
10530	1/9 Size	ea.	\$4.50

Universal Flat Lids

10416U	Full Size	ea.	\$24.50
10436U	1/2 Size	ea.	\$12.50
10456U	1/2 Size Long	ea.	\$13.25
10476U	1/3 Size	ea.	\$7.25
10496U	1/4 Size	ea.	\$6.50
10516U	1/6 Size	ea.	\$5.50
10536U	1/9 Size	ea.	\$4.50

Universal Flat Notched Lids

10417U	Full Size	ea.	\$24.50
10437U	1/2 Size	ea.	\$12.50
10457U	1/2 Size Long	ea.	\$13.25
10477U	1/3 Size	ea.	\$7.25
10497U	1/4 Size	ea.	\$6.50
10517U	1/6 Size	ea.	\$5.75
10537U	1/9 Size	ea.	\$4.00



Cateraide™ End Loader & Dolly

- Standard end loader without casters
- Made of durable polyethylene with thick foam insulation
- Holds multiple food pans; up to six 2 1/2" food pans
- Heat resistant to 200°F
- The door removes for easy cleaning
- NSF listed

MY400	Single End Loader	Black	\$325.00
MY410	Dolly Only	Black	\$135.00

* Stacked units on a dolly are pictured



Bronco™ Round Trash Can/Lid

- Features heavy-duty construction with double-reinforced stress ribs and drag skids for ultimate durability
 - Ergonomic Comfort Curve™ handles provide for easy handling
 - Lids are reinforced and have snap down tab locks with a simple press and pull release system for easy removal
 - Containers and lids are available in five Spectrum® colors for HACCP support
 - All colors are NSF Std. 21 for food contact and cleanability
 - Available colors: Blue(14), Grey(23), Green(09), Red(05), White(02), Yellow(04), and Orange(24)
- | | | | |
|--------|-------------|-----|---------|
| 341032 | 32 gal. Can | ea. | \$27.00 |
| 341033 | Lid | ea. | \$9.25 |



Centurian™ Waste Containers

- The aesthetically pleasing yet functional Centurian™ waste containers reduces bag vacuum issues allowing for easier removal
- The integrated liner cinches prevent liners from slipping into the container
- Ergonomic handles and bottom helper handles on base make lifting and dumping easier

343021	Half Round	21 gal.	ea.	\$55.00
343122	Tall Round	22 gal.	ea.	\$40.00
343523	Tall Square	23 gal.	ea.	\$45.00
343935	Square	35 gal.	ea.	\$73.00

Berkel

Get more done.



Tabletop Vacuum Packaging Machines

- Designed to meet most foodservice portion control needs
- Units have spacious stainless steel chambers and powerful, high quality pumps for high integrity double sealing
- Backed by our nation-wide service network

250	16"W x 21"D x 14"H Overall, 15"W x 14"D x 4"H Chamber	\$4,599
350	20"W x 24"D x 17"H Overall, 18"W x 18"D x 6 1/2"H Chamber 17"L Seal Bar, 1 1/2 hp	\$5,849



Planetary Mixers

- Electronic speed controlled gear transmission
- Standard with a stainless steel bowl, bowl guard, spiral dough hook, batter beater, wire whip and ingredient chute
- The innovative "two point" mounting system increases the ease of installing and removing the mixing bowl
- The stainless steel bowl guard slides open for adding ingredients, and is easily removed for cleaning
- Five-speed options including a blend speed to control splash out
- 100-120V, cULus, NSF

FMS10	10 qt.	1/2 hp	\$1,799
FMS20	20 qt.	1 hp	\$2,449
FMS30	30 qt.	2 hp	\$4,059
FMS40	40 qt.	2 1/2 hp	\$5,295



Premier Slicers

Manual:

- 13" stainless steel knife, one-piece base
- Controls located outside of drip zones
- Multi-grip product table enables operator to locate their own ideal hand position
- Table mounted sharpener so operators use normal slicing motion for sharpening
- Spring loaded kick stand for easy cleaning
- Slice thickness up to 1 1/2"

Automatic:

- Supports the same features of the X13
- Automatic operation at 20, 40, or 60 slices per minute
- Three stroke lengths for faster slicing of smaller products
- ETL, NSF listed

X13E	Manual	\$2,579
X13	Manual, w/Gauge Plate Interlock	\$2,869
X13AE	Automatic	\$3,779
X13A	Automatic, w/Gauge Plate Interlock	\$3,949



\$195⁰⁰



Pest-Pro Silent Fly Trap

- Flying insects are attracted to high intensity UV lights, and are silently captured by the adhesive boards hidden inside
- Disposable 4" x 16" adhesive pad
- Three-prong plug included
- 120V, 1 Phase, UL

BL100 Covers 900 sq. ft. 24"L x 10"H x 5"D



Curtronizer™ M-Series Strip Doors

- USDA/FDA approved strip doors for walk-in coolers and freezers
- Decrease energy loss and increase compressor life
- Quick and easy to install
- Pays for itself as quickly as three months

M106-PR-4080	6" Strips	For 36"W x 78"H Opening	\$210.00
M106-PR-4086	6" Strips	For 36"W x 84"H Opening	\$225.00
M108-PR-4080	8" Strips	For 36"W x 78"H Opening	\$185.00

Curtronizer™ NSF Approved Strip Doors

- Economical NSF approved strip doors for walk-in coolers and freezers
- Quick and easy to install
- Payback period as quickly as two months
- USDA Polar Reinforced low temperature PVC
- For 36"W x 78"H opening

CZN6PR4080	6" Strips	40"W x 80"H
CZN8PR4080	8" Strips	40"W x 80"H

Your Choice

\$140⁰⁰



Protecto Rack Covers

- Standard size rack covers (23"W x 28"D x 62"H)
- Universal loads
- Clear viewing windows, info pockets, and hanger loops (except for the Supro-14-EC)

Supro-14-EC	Light-Duty	All Clear PVC	\$55.00
Supro-20-TW	Heavy-Duty	Translucent White	\$135.00



\$495⁰⁰

Polar-Pro™ Swinging Doors

- All hardware is constructed of stainless steel with a lifetime warranty against corrosion
- Available in standard clear or USDA low temperature material in .080" and .120" thickness
- FDA, USDA

PPC0803678 Universal Mount For 36"W x 78"H Openings



Air-Pro™ Air Doors

- Stainless steel air door with two-speed motor, automatic door switch, and three-prong plug
- Lightweight and easy to install
- NSF approved for openings up to 7' high
- 115 volt

AP-2-36-1-SS	36"W	\$595.00
AP-2-42-1-SS	42"W	\$635.00
AP-2-48-1-SS	48"W	\$695.00

Think Beyond The Box For All Your Refrigeration Projects

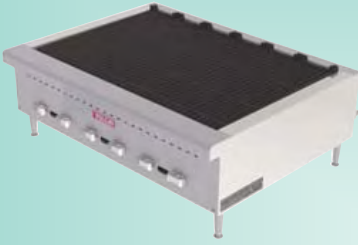
Bally Refrigerated Boxes is recognized internationally as a premiere manufacturer of Walk-In Coolers and Freezers and Refrigerated Buildings for the foodservice industry.

In addition, we provide a complete range of refrigeration equipment including:

- Evaporators, Condensing Units, Multi Compressor BF Line Condensing Units and Condensers for any application
- Blast Chillers and Freezers
- Self-Contained Straddle Systems and Drop-In Package Systems
- Innovative Controls, including the impressive new SmartVap II electronic control



Bally®



Restaurant Series Gas Charbroilers

- Stainless steel fronts, sides and front top ledges
- 13" cooking height on 4" adjustable legs
- Heavy-duty cast iron char-radiants
- One infinite heat control valve for each burner
- Units are 27"D x 13"H
- cCSAus, NSF
- One year limited parts and labor warranty

VCRB25	4 Burners	25 1/2"W	58,000 BTU/hr.	\$1,279
VCRB36	6 Burners	36"W	87,000 BTU/hr.	\$1,665

Restaurant Series Gas Hotplates

- Stainless steel front, sides and front top ledge
- Full width front crumb trays
- 13" cooking height on 4" adjustable legs
- Cast iron top grates
- One infinite heat control valve for each burner
- Standing pilot ignition system
- cCSAus, NSF
- One year limited parts and labor warranty

VCRH24	4 Burners	24"W	100,000 BTU/hr.	\$999.00
VCRH36	6 Burners	36"W	150,000 BTU/hr.	\$1,299.00

Restaurant Series Gas Griddles

- Fully welded stainless and aluminized steel chassis frames
- 1" thick polished steel griddle plates welded to 3/4" stainless steel backs, tapered side splashes and stainless steel grease troughs
- 12 1/2" cooking height on 4" adjustable legs
- Units are 27"D x 16"H
- cCSAus, NSF
- One year limited parts and labor warranty

VCRG24M	Manual Controls	2 Burners	24"W	50,000 BTU/hr.	\$1,049
VCRG36M	Manual Controls	3 Burners	36"W	75,000 BTU/hr.	\$1,299
VCRG48M	Manual Controls	4 Burners	48"W	100,000 BTU/hr.	\$1,579
VCRG24T	Snap Action Controls	2 Burners	24"W	50,000 BTU/hr.	\$1,665
VCRG36T	Snap Action Controls	3 Burners	36"W	75,000 BTU/hr.	\$2,025
VCRG48T	Snap Action Controls	4 Burners	48"W	100,000 BTU/hr.	\$2,525



\$675⁰⁰



**CROWN
VERITY
INC**



Charcoal Grill

- Outdoor charcoal grill with removable legs
- Simple slide action grate adjusts the grilling surface to three heights for better cooking control

BM60	60" x 24" Cooking Surface	72"W x 24"D x 31"H
-------------	---------------------------	--------------------

Country Club Outdoor Charbroilers

- The club grill incorporates two 30 lb. horizontal propane tanks (included)
- Allows the unit to be used in a buffet line to serve customers from the grill
- Heavy-duty brackets secure the tanks in place
- Designed to make removal/placement of the propane tanks an extremely simple process
- A heat shield keeps the heat from the burner box away from the tanks
- Liquid propane models

CCB60LP	58" x 21" Cooking Surface	8 Burners	69"W	129,000 BTU	\$3,575
CCB72LP	70" x 21" Cooking Surface	10 Burners	81"W	159,000 BTU	\$3,895



Outdoor BBQ Gas Grills

- 18 gauge, commercial grade 304 #4 stainless steel throughout
- With the roll dome down, they fire up quickly, preheating in less than six minutes
- Grills ship crated and fully assembled
- Liquid propane models

MCB30LP	28" x 21" Cooking Surface	4 Burners	38"W	64,500 BTU	\$1,925
MCB36LP	34" x 21" Cooking Surface	5 Burners	44"W	79,500 BTU	\$2,150
MCB48LP	46" x 21" Cooking Surface	6 Burners	56"W	99,000 BTU	\$2,650
MCB60LP	58" x 21" Cooking Surface	8 Burners	69"W	129,000 BTU	\$3,125
MCB72LP	70" x 21" Cooking Surface	10 Burners	82"W	159,000 BTU	\$3,350

Roll Dome Covers

RD30	Fits MCB30 Grills or 1/2 of MCB60 Grills	\$625.00	RD48	Fits MCB48 Grills	\$790.00
RD36	Fits MCB36 Grills or 1/2 of MCB72 Grills	\$675.00	RD60	Fits MCB60 Grills	\$1,150.00

**CONTACT YOUR DEALER
FOR PRICING!**

True



Glass Door Merchandisers

- Oversized, factory balanced, refrigeration systems hold 33°F to 38°F
- Exteriors - non-peel or chip white laminated vinyl
- Interiors - attractive, NSF approved, white aluminum interior liners with stainless steel floors
- "Low-E" double pane thermal insulated glass doors
- C/UL/US, NSF, CE

Swing Doors

GDM-19T 1 Door/4 Shelves, 1/3 hp
27" W x 24 1/2" D x 78 1/2" H

GDM-72 3 Doors/12 Shelves, 3/4 hp
78 1/2" W x 29 1/2" D x 79 1/2" H

Slide Doors

GDM-41 2 Doors/8 Shelves, 3/8 hp
47 1/2" W x 29 1/2" D x 78 1/2" H

**Solid Door
Reach-In
Refrigerators
& Freezers**

- Oversized refrigeration, stainless steel fronts and exterior temperature displays
- Refrigerators maintain a temperature of 33°F to 38°F
- T-19FZ maintains a temperature of 0°F
- 4" diameter swivel casters standard (2 1/2" diameter caster standard for T-19/T-19FZ)
- Anodized quality aluminum ends, back and top
- Energy Star Listed (except for T-19/T-19FZ)
- C/UL/US, NSF, CE

Swing Door Refrigerators

T-19 1 Door 27" L x 24 1/2" D x 75 1/2" H 1/3 hp

T-49 2 Doors 54 1/2" L x 29 1/2" D x 78 1/2" H 1/2 hp

Swing Door Freezers

T-19FZ 1 Door 27" L x 24 1/2" D x 75 1/2" H 1/3 hp

T-23F 1 Door 27" L x 29 1/2" D x 78 1/2" H 1/3 hp

*Does not include height for casters

**Horizontal
Bottle Cooler**

- Provides ice cold product 33°F to 38°F
 - All stainless steel countertops and lids
 - Attractive wear resistant heavy-duty laminated black vinyl exterior
 - Heavy-duty galvanized steel interior
 - Foamed-in-place high density cell insulation, polyurethane (CFC-free)
 - Removable, bottle cap openers and cap catchers
 - CSA, NSF, UL and CE
- TD-50-18** 49 1/2" x 26 1/2" x 33 1/2", 1/3 hp
Holds 16 1/2 Cases (Bottles),
24 Cases (Cans)



**Single-Duty
Deli Cases**

- Holds 38°F to 40°F temperature
- Exteriors - non-peel or chip white laminated vinyl
- Interiors - NSF approved, white aluminum liner
- Stainless steel floors with coved corners
- Both models: 29 1/2" D x 50 1/2" H
- **TSID-36-2:** C/UL/US, NSF
- **TSID-72-3:** UL, NSF
- **TSID-36-2** 2 Doors/2 Shelves 36 1/2" L 1/3 hp
- **TSID-72-3** 3 Doors/2 Shelves 72 1/2" L 1/2 hp



**Dipping
Cabinet
Freezer**

- Maintains -10°F to 8°F
 - Exclusive, reverse condensing fan motor reduces maintenance costs and optimizes cabinet performance
 - Heavy-duty, PVC coated wire can support racks
 - Removable, molded plastic can skirts for 9 1/2" dia., 3 gal. cans
 - 1/3 hp, 115/60/1, cUL, NSF
- TDC-47** 1 Lid, (13) 3 gal. Cans, 4 Racks,
47 1/2" L x 27 1/2" D x 51 1/2" H



Slim Freezer

**Horizontal
Dipping
Cabinet**

- Cold wall refrigeration system
 - Maintains -10° to 8°F
 - Exclusive, reverse condensing fan motor reduces maintenance costs and optimizes cabinet performance
 - Designed to hold four 9 1/2" diameter, 3 gallon ice cream containers
 - Dual access, removable lids
 - NSF-7 compliant for open food product
 - Entire cabinet structure is foamed-in-place using high density polyurethane insulation (CFC-free)
 - 1/4 hp, 5.7A, C/UL/US, NSF
- THDC-2SF** 30 1/2" L x 21" D x 32 1/2" H



**Glass Lid
Horizontal
Spot Freezer**

- Ideal for both ice cream and frozen food
 - Maintains temperature at -10°F
 - Two Low-E glass slide lids
 - Foamed-in-place CFC-free insulation
 - Cold wall environmentally friendly (134A) refrigeration system
 - Slide out condensing unit, manual defrost system
 - 2 1/2" swivel casters standard
 - 9" cord with NEMA 5-15R plug
- TFM-29FL** 29 1/2" W x 26 1/2" D x 31 1/2" H
*Height does not include 3 1/4" for casters



**Back Bar
Cooler**

- Energy efficient, "Low-E", thermal glass doors
 - Attractive, wear-resistant laminated heavy-duty black vinyl exterior
 - Oversized environmentally friendly (134A) forced-air refrigeration system maintains cold 33°F to 38°F product temperatures
 - Heavy gauge all stainless steel countertop
 - Interior - stainless steel floor with 1/2" lip and heavy galvanized steel walls
 - Foamed-in-place, high density polyurethane insulation (CFC-free)
 - Self-contained system, simple plug-in installation
 - Two doors, four shelves; holds 88 six packs (12 oz. cans) or two 1/2 barrels
- TBB-2G** 2 Doors 58 1/2" L x 27 1/2" D x 37" H 1/3 hp



**Direct Draw
Draft Beer
Dispensers**

- Wear-resistant laminated heavy-duty black vinyl exteriors
- All stainless steel countertops
- Interiors - stainless steel floors with 1/2" lips and heavy galvanized steel walls
- Forced-air refrigeration system
- Temperature range: 33°F to 38°F
- Foamed-in-place, high density polyurethane insulation
- 3" diameter beer columns, door locks are included
- C/UL/US, NSF
- **TDD-1** 1 Door 1 Half Barrel 23 1/2" x 31 1/2" x 39 1/2"
- **TDD-4** 3 Doors 4 Half Barrels 90 1/2" x 27 1/2" x 37"



Chef Base

- Top is made of one-piece, heavy-duty, 18 gauge reinforced stainless steel with drip guard
 - All stainless steel front, top and sides
 - Standard 4" diameter casters
 - Top can support up to 717 lbs. of equipment
 - Includes external mounted digital thermometer, one heavy gauge removable stainless steel pan divider per drawer (pans not included)
 - NSF approved
- TRCB-52** 2 Drawers 51 1/2" x 32 1/2" x 20 1/2" 1/3 hp



**Pizza Prep
Table**

- Stainless steel front, top and sides
 - Extra-deep 19 1/2" full length removable cutting board
 - Front breathing
 - 6" deep poly insert pans included
 - 5" swivel casters standard equipment
 - C/UL/US, NSF, CE
- TPP-67** 2 Doors/4 Shelves 67 1/2" L 1/3 hp



**Mega Top
Food Prep
Tables**

- Patented, roll-back, insulated covers
 - NSF-7 approved
 - 8 1/2" wide full length removable cutting boards, 1/6 size polycarbonate pans and casters are included
 - Stainless steel fronts, tops and sides
 - Interiors are NSF approved with white aluminum sides and tops, coved corners and stainless steel floors
 - Units are 34 1/2" D x 40 1/2" H*
 - C/UL/US, NSF, CE
- TSSU-48-12M-B** 2 Doors/4 Shelves 12 Pans (Top)
48 1/2" L, 1/3 hp
- TSSU-72-24M-B-ST** 3 Doors/6 Shelves 24 Pans (Top)
72 1/2" L, 1/2 hp



*Height does not include 6 1/4" for casters

**Sandwich/
Salad Unit**

- Stainless steel patented foam insulated cover
 - All stainless steel front, top and sides, aluminum finished back
 - Oversized and balanced, environmentally friendly (134A) refrigeration system
 - Interior - attractive, NSF approved, white aluminum sides and top, coved corners and stainless steel floor
 - Extra deep 11 1/2" full length removable cutting board included, 5" casters standard
 - cULUS, NSF, CE
- TSSU-36-8** 2 Doors/8 Pans 36 1/2" L x 30 1/2" D x 36 1/2" H
1/3 hp



*Height does not include 6 1/4" for casters

**Curved Glass
Dry Display
Case**

- Single pane curved glass front
 - Front glass tilts forward for easy cleaning
 - Adjustable PVC coated shelves
 - Special "brown bulb" lighting provides balanced color spectrum that enhances the appearance of bakery products and pastries
 - Front and sides standard with white laminate panels, five additional color options available at no charge
 - Stainless steel top
 - 50 1/2" L x 35 1/2" D x 47 1/2" H, 115/60/1, cUL, NSF
- TCGD-50** 2 Doors, 3 Shelves



**Curved Glass
Deli Case**

- Self-contained, environmentally friendly (CFC-free) 134A refrigeration system maintains 38°F to 40°F
 - Cabinet is NSF-7 certified to hold open food product
 - Insulated tempered double pane curved front glass
 - Two adjustable PVC coated shelves
 - Fluorescent lamps
 - White laminated vinyl exterior
 - Stainless steel top and trim
 - White aluminum interior sides and top
 - Stainless steel floor with coved corners
- TCGG-48** 2 Doors, 2 Shelf, 48 1/2" L x 35 1/2" D x 47 1/2" H,
1/3 hp





Bar Sinks

- Heavy-duty 18 gauge Type 300 series stainless steel construction
- 10" x 14" x 10" deep bowls with corner drains
- Bowls are fabricated, not deep drawn
- Raised ribbed drainboards
- Raised marine edge on front and sides
- Economy 4" faucet with 10" spout (PBF-4-D-10) and overflow stand pipes (PB-OVF-BS) included

EUB2S36-1LD	1 Drainboard Left	2-Compt.	36"L x 21"W	\$515.00
EUB2S36-1RD	1 Drainboard Right	2-Compt.	36"L x 21"W	\$515.00
EUB2S48-1LD	1 Drainboard Left	2-Compt.	48"L x 21"W	\$569.00
EUB2S48-1RD	1 Drainboard Right	2-Compt.	48"L x 21"W	\$569.00
EUB3S48-1LD	1 Drainboard Left	3-Compt.	48"L x 21"W	\$579.00
EUB3S48-1RD	1 Drainboard Right	3-Compt.	48"L x 21"W	\$579.00
EUB3S60-2D	2 Drainboards	3-Compt.	60"L x 21"W	\$645.00
EUB3S72-2D	2 Drainboards	3-Compt.	72"L x 21"W	\$690.00
EUB4S72-2D	2 Drainboards	4-Compt.	72"L x 21"W	\$799.00

Underbar Drainboards

- Stamped ribbed drainboard
- Heavy-duty 18 gauge Type 300 series stainless steel construction
- Galvanized legs
- Adjustable plastic bullet feet
- 30" working height

EUBD-1221	12"L x 21"W	\$199.00
EUBD-1821	18"L x 21"W	\$239.00
EUBD-2421	24"L x 21"W	\$259.00
EUBD-3021	30"L x 21"W	\$295.00
EUBD-3621	36"L x 21"W	\$319.00
EUBD-4821	48"L x 21"W	\$359.00



Underbar Dump Sink

- Heavy-duty 18 gauge Type 300 series stainless steel construction
- 10" x 14" x 6" fabricated sink bowl
- Galvanized legs
- Adjustable plastic bullet feet
- 30" working height

EUBDS-1014-P	1-Compt.	14" x 21"W
---------------------	----------	------------



\$44⁵⁰



Pre-Rinse Replacement Hose

- Lasts three times longer
- Three-ply "Aircraft" hydraulic hose
- Fits all brands of pre-rinse units

2918 44'L

\$59⁹⁵



Stainless Steel Pre-Rinse Replacement Hose

- Hose with insulated handle
- Three-ply aircraft hydraulic hose
- Fits all brands of pre-rinse units
- Not just lead free, but ZERO lead

71404 44'L

Your Choice

\$19²⁵



Stem Repair Kits

- For stainless steel faucets and pre-rinse units

Swivel Stem (For Faucets)

54526 Left Handed

54518 Right Handed

Check Stem (For Pre-Rinse Units)

54510 Left Handed

54502 Right Handed

FISHER

Ultra-Spray™ Pre-Rinse Heads

- Fits all brands of pre-rinse units
- Low flow 1.15 GPM, fastest in cleanliness tests

2949 Solid Brass, Chrome Plated **\$44.50**

71307 Stainless Steel, AB 1953 **\$54.95**

Compliant (No Lead)



\$124⁹⁵



Stainless Steel Backsplash Faucet

- 8" c/c backsplash faucet
- For mounting on stainless steel sinks
- Includes EZ Install adapter
- Not just lead free, but ZERO lead

60801 w/12" Swing Spout

Repair Kits

- For brass faucets and pre-rinse units

Swivel Stem (For Faucets)

3000-0001 Left Handed **\$19.50**

3000-0000 Right Handed **\$19.50**

Check Stem (For Pre-Rinse Units)

2000-0005 Left Handed **\$15.95**

2000-0004 Right Handed **\$15.95**

in sink erator™
FOODSERVICE

Model C1300™ Instant Hot Water Dispenser

- Elegant swivel high-arch spout makes filling pitchers and pots easier
- Up to 100 cups of 200°F hot water per hour are provided by the system's 2/3 gallon stainless steel tank
- Easy-action lever with automatic self-closing valve
- Solid brass construction with brilliant chrome-plated finish
- Manually resettable thermal cut-out
- Tank is always open to atmospheric pressure and requires no relief valve
- Mounts in standard sink opening or 1 1/4" drilled hole
- One year full warranty on parts and labor

C1300 1300W, 11.3A, 115V UL



\$419⁰⁰

\$629⁰⁰



Commercial Food Waste Disposer

- Designed for light foodservice applications such as convenience stores, delis, and fast food operations
- Disposer mounting included with unit
- Mounting fits standard 3 1/2" to 4" sink opening
- No welding required
- Automatic reversing motor for longer life and trouble-free operation
- Stainless steel grind chamber
- Cast nickel chrome cutting element

LC50 14 1/2"H 1 Phase, 120V



Pre-Rinse Units

- 8" on center, backsplash mounted with add on faucet and 12" swing spout
- Powerful 1.15 GPM spray valve for water savings plus speedy cleaning
- No need to pull dish table or sink away from wall, EZ install adapters make replacement a snap

48917 Solid Brass, (Chrome Plated) **\$279.95**

52965 Stainless Steel, AB 1953 Compliant (No Lead) **\$329.95**

\$109⁹⁵



Backsplash Faucet

- 8" c/c backsplash faucet
- For mounting on stainless steel sinks
- Includes EZ install adapter

64769 w/12" Swing Spout



Pedestal Glass Fillers

- For paper or glass cups

1008 10", Polished Chrome **\$82.50**

54186 10", Stainless Steel **\$109.50**

Ladder Back Chairs & Bar Stools

- European beechwood
- Hardwood ladder back frame
- Commercial quality
- Durable construction
- Back rest height: Chair - 33 1/2", Bar Stool - 43 1/2"
- Hardwood seat height: Chair - 18 1/2", Bar Stool - 29 1/2"
- Seat: 17"W x 16 1/2"D

Chairs - Natural Finish

ROY 8001N	Hardwood Seat	\$80.00
ROY 8001N*	Upholstered Seat	\$75.00

Chairs - Walnut Finish

ROY 8001W	Hardwood Seat	\$80.00
ROY 8001W*	Upholstered Seat	\$75.00

Bar Stools - Natural Finish

ROY 8002N	Hardwood Seat	\$119.00
ROY 8002N*	Upholstered Seat	\$115.00

Bar Stools - Walnut Finish

ROY 8002W	Hardwood Seat	\$122.50
ROY 8002W*	Upholstered Seat	\$115.00

*Color code for upholstery (Brown=BRN, Crimson=CRM, Red=R or Black=B)



ROYAL INDUSTRIES®

Foodservice & Hospitality Products

NSF Stainless Steel Wall Shelves

• 18 gauge stainless steel		
• Includes mounting brackets		
ROYWSH1224	12" x 24"	\$42.50
ROYWSH1236	12" x 36"	\$49.00
ROYWSH1248	12" x 48"	\$54.00
ROYWSH1260	12" x 60"	\$61.50
ROYWSH1272	12" x 72"	\$72.50



Microwave Shelves

• NSF stainless steel		
ROYMS1824	18" x 24"	\$55.00
ROYMS2424	24" x 24"	\$65.00



Ladder Back Metal Chairs & Bar Stools

- Matte black finish frame
- Nylon feet
- Commercial quality durable construction

Chairs

ROY9001*	Upholstered Seat	\$55.00
ROY9001N	Natural Finish Wood Seat	\$62.50
ROY9001W	Walnut Finish Wood Seat	\$62.50

Bar Stools

ROY9002*	Upholstered Seat	\$89.00
ROY9002N	Natural Finish Wood Seat	\$95.00
ROY9002W	Walnut Finish Wood Seat	\$95.00

*Color code for upholstery (Brown=BRN, Crimson=CRM, Red=R or Black=B)



High Speed Automatic Hand Dryer

- Steel case with porcelain enameled coating
- Infrared automatic detection
- Motor overload protection
- Replaceable fuse
- High speed drying in 10-15 seconds

ROYDRYJA01 110/60/1 1600W

\$275.00



Equipment Stands

• NSF stainless steel		
ROYES3024	30" x 24"	\$87.00
ROYES3036	30" x 36"	\$119.00
ROYES3048	30" x 48"	\$135.00
ROYES3060	30" x 60"	\$159.00
ROYES3072	30" x 72"	\$179.00



Hand Sinks w/Faucets

- 20 gauge 304 stainless steel hand sinks
- Units include wall mount clips, gooseneck faucets and 1 1/2" drain baskets

ROYHS12	12" Sink	\$80.00
ROYHS12SP	12" Sink w/Splash Guard	\$115.00
ROYHS15	15" Sink	\$88.50
ROYHS15SP	15" Sink w/Splash Guard	\$119.00



Bun Pan Racks/Covers

- NSF aluminum
- Holds full-sized and half-sized bun pans
- Knocked down

Racks		
ROYBPR9	9 Pan	\$75.00
ROYBPR20	20 Pan	\$113.00
Covers		
ROYBPR9CVR	Fits 9 Pan	\$14.50
ROYBPR20CVR	Fits 20 Pan	\$22.00



Grease Filters

- Stainless steel

ROYHF1620	16" x 20"	\$14.00
ROYHF1625	16" x 25"	\$14.75
ROYHF2016	20" x 16"	\$14.00
ROYHF2020	20" x 20"	\$14.75
ROYHF2025	20" x 25"	\$16.25



Crowd Control Stanchions

• Features 6 1/2" retractable belt in four-way cassette		
• 36"H x 12" base		
ROYCCS36BK	Black	\$39.00
ROYCCS36SS	Stainless Steel	\$47.00



Stand-Up Table Bases

- For table top sizes 24" - 30", round or square
- 19" chrome wagon wheel foot rests
- Cast iron spiders, cast iron bases
- Black powder coated 3" x 37" steel columns
- Heavy-duty nickel plated glides

ROY RTB 142 22" x 22" Base

ROY RTB 143 22" dia. Base

\$75.00

\$95.00



Round Table Bases

- Extra heavy-duty round cast iron bases
- 3" diameter powder coated steel columns
- Heavy-duty nickel plated glides
- Table mounting screws

ROY RTB 17 R 17" dia. Base for Tops \$45.00

ROY RTB 22 R 22" dia. Base for Tops \$58.00

ROY RTB 22 R 22" dia. Base for Tops \$58.00

ROY RTB 22 R 22" dia. Base for Tops \$58.00

ROY RTB 22 R 22" dia. Base for Tops \$58.00

ROY RTB 30 R 30" dia. Base for Tops \$98.00

ROY RTB 30 R 30" dia. Base for Tops \$98.00

ROY RTB 30 R 30" dia. Base for Tops \$98.00

ROY RTB 30 R 30" dia. Base for Tops \$98.00

ROY RTB 30 R 30" dia. Base for Tops \$98.00

ROY RTB 30 R 30" dia. Base for Tops \$98.00

ROY RTB 30 R 30" dia. Base for Tops \$98.00

ROY RTB 30 R 30" dia. Base for Tops \$98.00

ROY RTB 30 R 30" dia. Base for Tops \$98.00

ROY RTB 30 R 30" dia. Base for Tops \$98.00

ROY RTB 30 R 30" dia. Base for Tops \$98.00

ROY RTB 30 R 30" dia. Base for Tops \$98.00

ROY RTB 30 R 30" dia. Base for Tops \$98.00

ROY RTB 30 R 30" dia. Base for Tops \$98.00

ROY RTB 30 R 30" dia. Base for Tops \$98.00

ROY RTB 30 R 30" dia. Base for Tops \$98.00

ROY RTB 30 R 30" dia. Base for Tops \$98.00

ROY RTB 30 R 30" dia. Base for Tops \$98.00

ROY RTB 30 R 30" dia. Base for Tops \$98.00

ROY RTB 30 R 30" dia. Base for Tops \$98.00

ROY RTB 30 R 30" dia. Base for Tops \$98.00

ROY RTB 30 R 30" dia. Base for Tops \$98.00

ROY RTB 30 R 30" dia. Base for Tops \$98.00

ROY RTB 30 R 30" dia. Base for Tops \$98.00

ROY RTB 30 R 30" dia. Base for Tops \$98.00

ROY RTB 30 R 30" dia. Base for Tops \$98.00

ROY RTB 30 R 30" dia. Base for Tops \$98.00

ROY RTB 30 R 30" dia. Base for Tops \$98.00

ROY RTB 30 R 30" dia. Base for Tops \$98.00

ROY RTB 30 R 30" dia. Base for Tops \$98.00

ROY RTB 30 R 30" dia. Base for Tops \$98.00

ROY RTB 30 R 30" dia. Base for Tops \$98.00

ROY RTB 30 R 30" dia. Base for Tops \$98.00

ROY RTB 30 R 30" dia. Base for Tops \$98.00

ROY RTB 30 R 30" dia. Base for Tops \$98.00

ROY RTB 30 R 30" dia. Base for Tops \$98.00

ROY RTB 30 R 30" dia. Base for Tops \$98.00

ROY RTB 30 R 30" dia. Base for Tops \$98.00

ROY RTB 30 R 30" dia. Base for Tops \$98.00

ROY RTB 30 R 30" dia. Base for Tops \$98.00

ROY RTB 30 R 30" dia. Base for Tops \$98.00

ROY RTB 30 R 30" dia. Base for Tops \$98.00

ROY RTB 30 R 30" dia. Base for Tops \$98.00

ROY RTB 30 R 30" dia. Base for Tops \$98.00

ROY RTB 30 R 30" dia. Base for Tops \$98.00

ROY RTB 30 R 30" dia. Base for Tops \$98.00

ROY RTB 30 R 30" dia. Base for Tops \$98.00

ROY RTB 30 R 30" dia. Base for Tops \$98.00

ROY RTB 30 R 30" dia. Base for Tops \$98.00

ROY RTB 30 R 30" dia. Base for Tops \$98.00

ROY RTB 30 R 30" dia. Base for Tops \$98.00

ROY RTB 30 R 30" dia. Base for Tops \$98.00

ROY RTB 30 R 30" dia. Base for Tops \$98.00

ROY RTB 30 R 30" dia. Base for Tops \$98.00

ROY RTB 30 R 30" dia. Base for Tops \$98.00

ROY RTB 30 R 30" dia. Base for Tops \$98.00

ROY RTB 30 R 30" dia. Base for Tops \$98.00

ROY RTB 30 R 30" dia. Base for Tops \$98.00

ROY RTB 30 R 30" dia. Base for Tops \$98.00

ROY RTB 30 R 30" dia. Base for Tops \$98.00

ROY RTB 30 R 30" dia. Base for Tops \$98.00

ROY RTB 30 R 30" dia. Base for Tops \$98.00



Square Table Bases

- Cast iron bases and spiders
- 3" diameter black powder coated steel columns
- Heavy-duty nickel-plated glides
- Table mounting screws

ROY RTB 2222 22" x 22" Base for 24" to 30" \$36.50

ROY RTB 2230 22" x 30" Base for 24" x 42" \$42.50

ROY RTB 2230 22" x 30" Base for 24" x 42" \$42.50

ROY RTB 2230 22" x 30" Base for 24" x 42" \$42.50

ROY RTB 2230 22" x 30" Base for 24" x 42" \$42.50

ROY RTB 2230 22" x 30" Base for 24" x 42" \$42.50

ROY RTB 2230 22" x 30" Base for 24" x 42" \$42.50

ROY RTB 2230 22" x 30" Base for 24" x 42" \$42.50

ROY RTB 2230 22" x 30" Base for 24" x 42" \$42.50

ROY RTB 2230 22" x 30" Base for 24" x 42" \$42.50

ROY RTB 2230 22" x 30" Base for 24" x 42" \$42.50

ROY RTB 2230 22" x 30" Base for 24" x 42" \$42.50

ROY RTB 2230 22" x 30" Base for 24" x 42" \$42.50

ROY RTB 2230 22" x 30" Base for 24" x 42" \$42.50

ROY RTB 2230 22" x 30" Base for 24" x 42" \$42.50

ROY RTB 2230 22" x 30" Base for 24" x 42" \$42.50

ROY RTB 2230 22" x 30" Base for 24" x 42" \$42.50

ROY RTB 2230 22" x 30" Base for 24" x 42" \$42.50

ROY RTB 2230 22" x 30" Base for 24" x 42" \$42.50

ROY RTB 2230 22" x 30" Base for 24" x 42" \$42.50

ROY RTB 2230 22" x 30" Base for 24" x 42" \$42.50

ROY RTB 2230 22" x 30" Base for 24" x 42" \$42.50

ROY RTB 2230 22" x 30" Base for 24" x 42" \$42.50

ROY RTB 2230 22" x 30" Base for 24" x 42" \$42.50

ROY RTB 2230 22" x 30" Base for 24" x 42" \$42.50

ROY RTB 2230 22" x 30" Base for 24" x 42" \$42.50

ROY RTB 2230 22" x 30" Base for 24" x 42" \$42.50

ROY RTB 2230 22" x 30" Base for 24" x 42" \$42.50

ROY RTB 2230 22" x 30" Base for 24" x 42" \$42.50

ROY RTB 2230 22" x 30" Base for 24" x 42" \$42.50

ROY RTB 2230 22" x 30" Base for 24" x 42" \$42.50

ROY RTB 2230 22" x 30" Base for 24" x 42" \$42.50

ROY RTB 2230 22" x 30" Base for 24" x 42" \$42.50

ROY RTB 2230 22" x 30" Base for 24" x 42" \$42.50

ROY RTB 2230 22" x 30" Base for 24" x 42" \$42.50

ROY RTB 2230 22" x 30" Base for 24" x 42" \$42.50

ROY RTB 2230 22" x 30" Base for 24" x 42" \$42.50

ROY RTB 2230 22" x 30" Base for 24" x 42" \$42.50

ROY RTB 2230 22" x 30" Base for 24" x 42" \$42.50

ROY RTB 2230 22" x 30" Base for 24" x 42" \$42.50

ROY RTB 2230 22" x 30" Base for 24" x 42" \$42.50

ROY RTB 2230 22" x 30" Base for 24" x 42" \$42.50

ROY RTB 2230 22" x 30" Base for 24" x 42" \$42.50

ROY RTB 2230 22" x 30" Base for 24" x 42" \$42.



X*PERT™ Series Countertop Standard Holding Drawers

- Designed to hold everything from crispy foods to moist foods at required UL Sanitation temperatures
- Heating system is designed to provide fast start-ups and heat recoveries when drawers are open and closed
- Perimeter heating elements distribute heat evenly through the drawer area, promoting consistent food temperatures throughout the food pan while avoiding scalding due to warmer hot spots
- Stainless steel exterior construction; reinforced stainless steel drawer slides and roller; insulated on top and side panels with 1" fiberglass insulation
- Drawer slides feature a unique jam-free side roller, a design that facilitates the smoothest closing action in the industry from any angle in which the operator pushes the drawer
- Each drawer slide rides on four self-lubricated, stainless steel rollers that are secured to the interior walls with a reinforced bolt system
- Each drawer is individually controlled by a protected thermostat, indicator lamp and rolling read-out thermometer
- Temperature range of 80°F to 220°F
- Each drawer has removable 12" x 20" x 6" deep stainless steel pan
- Vent slides in each drawer front allow operator to control the amount of humidity in each compartment
- Each unit is equipped with a 60', three-wire, grounded power cord that terminates with a 90° three pronged male plug

HDD11	Single Drawer	14 ¹ / ₂ "H x 27 ¹ / ₂ "W x 21"D"	\$1,125
HDD12	Double Drawer	24 ¹ / ₂ "H x 27 ¹ / ₂ "W x 21"D"	\$1,875
HDD13	Triple Drawer	33 ¹ / ₂ "H x 27 ¹ / ₂ "W x 21"D"	\$2,495

*Dimensions include legs, but do not include handle

\$225⁰⁰



\$389⁰⁰

Baker's Dough Scale

- A rugged, accurate, even-balance scale equipped with a specially designed, seamless, white plastic commodity scoop, counterweight, and 9" diameter plates
- Precision built, with hardened steel pivots and v-shaped hardened bearings
- Finished in durable USDA approved white oven-baked enamel

1001TB Beam Graduations:
16 oz. x 1/4 oz. (500 g x 5 g)

Fish Scale

- 8" dial, with plastic lens, white face with black graduations and numerals
- 14¹/₂" round stainless steel pan with drainage holes

MCS20F 20 lb.

\$299⁰⁰



Price Computing Scale

- Designed for portable use with a built-in rechargeable battery pack
- Pressing the PrePack key after the unit price has been entered retains that price for repetitive price-computing
- Lift-off stainless steel commodity tray, and sealed membrane keypad make cleaning an easy chore
- Also features a dust/debris cover and a water well under the platter to further prevent against moisture and spills
- Display: 3/4" LCD with backlight
- Power: rechargeable battery pack or 115 VAC 50/60Hz or 230 VAC 50/60Hz

DS30 30 lb. x .01 lb.

Portion Control Scale

- Easy to read LCD display
- Power-saving Auto-Off feature
- Easy-to-clean removable stainless steel platter
- Switch selectable units
- Dual power source - battery or AC power
- NSF certified

PS7 7 lb. x 0.1 oz., **\$185.00**

112 oz. x 0.1 oz.,

112 oz. x 1/8 oz.,

3000 g x 1 g,

7 lb. x 0.005 lb.,

8.02"W x 4.96"D Tray

ET7 Extended Tray **\$39.95**

9¹/₂"W x 6¹/₂"D
Stainless Steel

Super Erecta Pro™ Shelves

- Removable polymer shelf mats are corrosion proof and impact resistant
- Shelf mats can easily be lifted off the shelf frames for cleaning in sinks or wash/dish machines
- Microban® antimicrobial protection is built into the shelf mats, epoxy coated shelf frames and posts
- Steel corners, side and center supports assure a sturdy and stable weight bearing surface
- Super Erecta Pro™ shelves are interchangeable with other Super Erecta shelving systems
- Mobile posts come without leveling bolt assembly to accommodate casters
- Stationary posts are equipped with a leveling bolt to account for uneven floors
- Polymer shelf mats have a lifetime warranty against rust and corrosion
- Microseal 3 coated shelf frames and posts have a 12 year limited warranty against rust and corrosion
- NSF listed

Shelves			
PR1836NK3	18"D x 36"L	ea.	\$62.00
PR1848NK3	18"D x 48"L	ea.	\$75.00
PR1860NK3	18"D x 60"L	ea.	\$89.00
PR1872NK3	18"D x 72"L	ea.	\$99.00
PR2436NK3	24"D x 36"L	ea.	\$75.00
PR2448NK3	24"D x 48"L	ea.	\$89.00
PR2460NK3	24"D x 60"L	ea.	\$109.00
PR2472NK3	24"D x 72"L	ea.	\$129.00

Mobile Posts			
54UPK3	54 ¹ / ₂ "H	ea.	\$16.00
63UPK3	62 ¹ / ₂ "H	ea.	\$18.50
74UPK3	74 ¹ / ₂ "H	ea.	\$20.00
Stationary Posts			
54PK3	54"H	ea.	\$16.00
63PK3	63"H	ea.	\$18.50
74PK3	74"H	ea.	\$20.00



Bow-Tie™ Dunnage Rack

- Racks join together easily without tools in end-to-end and back-to-back configurations with exclusive Bow-Tie™ system
- Rust and corrosion proof polymer construction
- Built-in Microban® antimicrobial product protection to protect from bacteria, mold, mildew and fungi that cause odors, stains and product degradation

HP2236PDMB 22"W x 36"L x 12"H
1500 lb. Capacity

\$169⁰⁰



BC Series Utility Cart

- Shelves are specially designed to resist staining and wipe clean easily
- Holds 150 lbs./shelf
- Black

BC162734BL 18"W x 28"L x 33¹/₄"H

\$160⁰⁰



\$399⁰⁰

Sink Task Station Wall Kit

- All-in-one box, easy assembly - Smartwall G3 Sink Task Station Wall Shelving Kit
- Includes one 40" wall track, two uprights, two shelf supports, one Metroseal 3 wire shelf, one Metroseal 3 wire grid, one small shelf, two wire baskets, one bin holder, one small bin, two prong hooks and six standard hooks



SWK36-1A1-SR 20¹/₂" x 40" x 31"

\$2,150

C5™ 1 Series Heated Holding & Proofing Cabinet

- Non-insulated combination model
- Clear polycarbonate door provides visibility of the contents of the cabinet without the heat loss associated with opening the door
- Features 80°F to 190°F operating temperature range
- All modules are removable, without tools, for easy cleaning of the cabinet interior

C519CFC4 Full Height Door



\$5,429

C5™ T-Series Heated Holding Cabinet w/Transport Armour™

- Foamed-in-place polyurethane insulation provides superior heat retention and structural rigidity
- While unplugged and in transit, an available mobile power option gently circulates air inside the cabinet, eliminating hot and cold spots that endanger food safety
- The durability, efficiency, and intelligence of T-Series make it the ideal solution for all mobile applications
- Steel reinforced polymer handles double as bumpers
- Mobile power for better temperature stratification and temperature alerts
- Adjustable slides on 1¹/₂" spacing
- Fixed lip load slides for 12" x 20" and GN pans
- Heavy-duty 6" casters
- Easy to clean surfaces
- Interchangeable slide systems

C5T8-DSB Digital Controller,
Adjustable Bottom Load,
5/6 Height





Granite Tabletops

- Lightweight design
- Extremely durable
- Safe for indoor or outdoor use
- Custom sizes available as well
- Other colors also available

G20324X30	24" x 30"	Uba-Tuba	\$139.00
G20330X30	30" x 30"	Uba-Tuba	\$165.00
G20324RD	24" Round	Uba-Tuba	\$165.00
G20330RD	30" Round	Uba-Tuba	\$179.00
G20336RD	36" Round	Uba-Tuba	\$199.00



\$159⁰⁰



TIKI® Heritage Patio Torch

- TIKI® Brand patio torches are a perfect addition to create an inviting, dramatic, nighttime oasis
 - This torch is easy to assemble without the use of tools
 - Filled with TIKI® Brand citronella torch fuel, your torch can burn for hours
 - Two wicks produce an extra large flame which provides more light
 - Patent-pending "no-touch pour technology"; makes torch easy to fill: when you run out of fuel, just pour more directly into the top of the torch
 - Aluminum alloy construction for weather resistance
 - Torch cover protects torch head from the elements when not in use
 - Snuffer cap included
 - Wider extra heavy base for added stability
- TK08047** 14" dia. x 65"H Weathered Finish

TIKI® Traditional Torches

- Each torch stands 5' tall, comes with a snuffer cap, and has angle cut on bottom for ease of placing in the ground
- Each torch comes with a refillable metal fuel canister
- Can also be used with a TIKI® Brand Ready 2 Light® torch fuel canister



TK10221	Royal Polynesian Torch, 3 1/2" dia., 16 oz. Canister	6/cs.	\$55.00
TK09455	Islander Torch, 3 1/2" dia., 16 oz. Canister	6/cs.	\$59.00
TK09148	Mediterranean Torch, 3 1/2" dia., 12 oz. Canister	6/cs.	\$89.00

New *BiteFighter®* advanced formula torch fuel uses the natural repellency of Citronella and Cedar Oil, for that one-two punch of ambience and mosquito repellency.

\$36⁰⁰
Per Case

BiteFighter® Ready 2 Light® Torch Fuel

- Easy to use - convenient metal pre-filled can with torch fuel
 - Burns up to 12 hours
 - Fits all TIKI® Brand bamboo torches
- TK08373** 12 oz. 6/cs.



\$65⁰⁰
Per Case

BiteFighter® Citronella & Cedar Torch Fuel

- Recyclable PET bottle
 - Will fill a standard bamboo torch approximately four to five times
- TK08435** 64 oz. 6/cs.



\$259⁰⁰



Hot Dog Steamer

- Constructed of stainless steel
 - Features all day steaming with a six quart capacity water pan and adjustable thermostat
 - Holds 100 standard hot dogs and 36 to 48 buns
 - 120V, 1000W, 8.3A
- HDS1000W** 18"W x 12 1/2"D x 16"H



Folding Chafer Dish

- Constructed of all stainless steel
 - Folding frame design allows for taking up less storage space and makes for easy transport
 - Has a cool to the touch Bakelite handle on the lid and clips on the frame to secure the lid during usage
 - Set comes complete with lid, food and water pan and fuel holders
 - Easy set up
- FCD-8** 8 qt.



\$359⁰⁰



Roller Grill

- 304 stainless steel construction
 - 360° of rotation
 - Offers two independent knobs to control front and back rollers
 - Reliable high torque motor
 - Easy to clean
 - Holds 24 hot dogs
 - Sneeze guard available
- RG09** 120V, 60 Hz, 6.0A 720W

\$195⁰⁰



Roller Grill Cover

- Acrylic sneeze guard cover
 - Fits RG Series roller grill
- RG09COV** 23.19" x 16.16" x 7.87"

\$889⁰⁰

Convection Oven w/Grill/Broiler

- Professional half size convection oven constructed of heavy-duty stainless steel with small footprint design for all countertops
 - Featuring a grill/broil function (570°F) to add grilling, broiling and roasting capabilities
 - Cook and hold feature keeps food warm for up to 180 minutes
 - 120°-500°F temperature range with double wall glass doors
 - Handles four half-size sheet pans with 3 1/2" of space between each shelf
 - Manual control knobs, 60 minute timer and interior light
 - CE, NSF
- COH-3100WPRO** 22"H x 31"W x 21 1/2"D 220V, 60 Hz, 14A, 3100W



Camwear® Food Storage Boxes



- Clear polycarbonate stands up to tough treatment, withstanding temperatures from -40°F to 210°F
 - Colander Kit includes: one 8" deep colander, one 18" x 26" x 9" Camwear food box and one 18" x 26" SlidingLid™
 - Dishwasher safe, NSF listed
- | | | | |
|--------------------|--------------|--------------------|-----------------|
| 12183CW135 | 1 1/4 gal. | 12" x 18" x 3 1/2" | \$13.75 |
| 12186CW135 | 3 gal. | 12" x 18" x 6" | \$17.50 |
| 12189CW135 | 4 1/4 gal. | 12" x 18" x 9" | \$23.50 |
| 18263CW135 | 5 gal. | 18" x 26" x 3 1/2" | \$23.50 |
| 18266CW135 | 8 1/4 gal. | 18" x 26" x 6" | \$29.95 |
| 18269CW135 | 13 gal. | 18" x 26" x 9" | \$39.95 |
| 182612CW135 | 17 gal. | 18" x 26" x 12" | \$48.50 |
| 1218CCW135 | Flat Lid | 12" x 18" | \$8.50 |
| 1826CCW135 | Flat Lid | 18" x 26" | \$16.95 |
| 1218SCCW | Sliding Lid™ | 12" x 18" | \$18.25 |
| 1826SCCW | Sliding Lid™ | 18" x 26" | \$28.50 |
| 1826CLCRKIT | Colander Kit | | \$109.95 |

CAMBRO® TRUSTED FOR GENERATIONS™

Camwear® Round Storage Containers

- Completely clear with imprinted graduation marks
 - Durable polycarbonate construction is virtually unbreakable
 - Withstands temperatures of -40°F to 210°F
 - NSF listed
- | | | |
|------------------|--------------------------------|----------------|
| RFSCW1 | 1 qt. | \$4.50 |
| RFSCW2 | 2 qt. | \$5.95 |
| RFSCW4 | 4 qt. | \$9.50 |
| RFSCW6 | 6 qt. | \$10.95 |
| RFSCW8 | 8 qt. | \$13.95 |
| RFSCW12 | 12 qt. | \$19.95 |
| RFSCW18 | 18 qt. | \$24.95 |
| RFSCW22 | 22 qt. | \$28.95 |
| RFS1SCPP | Seal Cover for 1 qt. | \$1.50 |
| RFS2SCPP | Seal Cover for 2 & 4 qt. | \$2.25 |
| RFS6SCPP | Seal Cover for 6 & 8 qt. | \$2.25 |
| RFS12SCPP | Seal Cover for 12, 18 & 22 qt. | \$4.50 |



Camsquare® Camwear® Containers

- Made of crystal clear, virtually unbreakable polycarbonate
 - Withstands temperature ranges from -40°F to 210°F
 - Covers sold separately
- | | | |
|------------------|---------------------------------|----------------|
| 2SFSCW | 2 qt. | \$5.50 |
| 4SFSCW | 4 qt. | \$8.50 |
| 6SFSCW | 6 qt. | \$9.95 |
| 8SFSCW | 8 qt. | \$11.95 |
| 12SFSCW | 12 qt. | \$15.95 |
| 18SFSCW | 18 qt. | \$21.95 |
| 22SFSCW | 22 qt. | \$27.95 |
| SFC2SCPP | Seal Cover Fits 2 & 4 qt. | \$2.25 |
| SFC6SCPP | Seal Cover Fits 6 & 8 qt. | \$2.75 |
| SFC12SCPP | Seal Cover Fits 12, 18 & 22 qt. | \$3.95 |

Slant Top Ingredient Bins

- S-hook on the front for conveniently hanging a scoop
 - White with a clear lid, NSF listed
- | | | | |
|--------------|------------------------------|---------|-----------------|
| IBS20 | 170 lb. Sugar, 140 lb. Flour | 21 gal. | \$212.50 |
| IBS27 | 226 lb. Sugar, 150 lb. Flour | 27 gal. | \$218.25 |
| IBS37 | 314 lb. Sugar, 225 lb. Flour | 37 gal. | \$229.95 |



Flat Top Ingredient Bin

- Hygienic clear sliding lid allows for quick content ID
 - S-hook included for hanging scoop
 - Made of FDA-accepted material - no liners are needed
 - Sliding lid, NSF approved
- | | | | |
|---------------|------------------------------|---------|-----------------|
| IBSF27 | 216 lb. Sugar, 150 lb. Flour | 27 gal. | \$224.95 |
|---------------|------------------------------|---------|-----------------|



Camwear® Serving Spoons

- Polycarbonate construction
 - Black
 - NSF certified
- | | | | |
|--------------------|---------|------------|---------------|
| SPO11CW110 | 11 1/8" | Solid | \$2.50 |
| SPO13CW110 | 13 1/8" | Solid | \$4.50 |
| SPOP11CW110 | 11 1/8" | Perforated | \$2.50 |
| SPOP13CW110 | 13 1/8" | Perforated | \$4.50 |



Camwear® Salad Spoon

- Polycarbonate construction
 - Black
 - NSF certified
- | | | | |
|--------------------|-----|------------|---------------|
| SPOP10CW110 | 10" | Perforated | \$1.95 |
|--------------------|-----|------------|---------------|



StoreSafe® Food Rotation Labels

- Leaves no sticky residue, eliminates scraping and saves operators time and money
- Withstands high heat temperatures up to 200°F for up to four hours
- Microwave safe

- Bulk Dispenser Packs (250 Labels/Roll):**
- | | | | | |
|------------------|---------------|-------------|-----|-----------------|
| 125SLB250 | Half Size | 1 1/2" x 2" | cs. | \$203.50 |
| 23SLB250 | 6 Rolls/Case | 2" x 3" | cs. | \$114.50 |
| 23SLB250 | 24 Rolls/Case | 2" x 3" | cs. | \$409.95 |
- Retail Bistler Pack (100 Labels/Roll):**
- | | | | | |
|-------------|---------------|---------|-----|-----------------|
| 23SL | 20 Rolls/Case | 2" x 3" | cs. | \$219.95 |
|-------------|---------------|---------|-----|-----------------|



Lugano™ Tongs

- Angled tongs have an ergonomic shape that make it easy to serve salads, pasta and other items
 - Easy-Grasp tongs combine a fork and spoon for a secure grip on a variety of products
 - Will withstand temperatures up to 300°F
 - Available in Black, Beige, Clear or White
- | | | |
|--------------|-------------------|---------------|
| TGAS | 8 1/2" Easy-Grasp | \$2.50 |
| TGG9 | 9 1/2" Easy-Grasp | \$2.50 |
| TGA11 | 10 3/4" Angled | \$2.75 |



\$2,095

High-Temp Countertop Dishwasher

- Built-in booster for rinse
- Furnished with insulated panels
- Rinse-additive pump
- Analog temperature gauges
- Assortment of racks included
- Rack capacity: 13 1/2" x 13 1/2"
- Stainless steel construction



\$3,409

High-Temp Undercounter Dishwasher

- Completely automatic wash and rinse cycles
- Built-in automatic detergent pump
- Furnished with rinse-additive detergent and drain pumps



F18DP 24 Racks/hr.



Kool-It Glass Door Coolers

- White aluminum construction
- Supplied with casters
- One year parts and labor with four additional years on compressor (part only)



KGM22 1 Door, 5 Shelves, 22.19 cu. ft., **\$1,225**

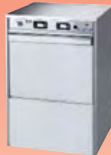
KSM42 2 Doors, 8 Shelves, 42.37 cu. ft., 53 3/4" W x 27 1/4" D x 80 3/4" H **\$1,799**



\$2,939

High-Temp Undercounter Cup & Glass Washer

- Built-in booster for rinse
- Glassware of all sizes to a maximum of 11"
- Standard equipment includes: one 16-compartment (4 x 4) angled-section glassware rack, one open combination rack for cups, bowls, cutlery and assorted wares, and one 15-place saucer rack insert
- 208-220/60/1, 14.4A



F16DP 16" x 16" Rack

\$6,435

High-Temp Single Rack Dishwasher

- Door-type dishwasher
- Fully constructed of 100% stainless steel
- Integrated booster for hot water 185°F rinse
- Powerful 1 1/2 hp wash motor pump
- Straight through or corner application
- 208-240V, 60 Hz, Single or Three Phase



F22 52 Racks/hr.

Presto! Economy Mixers

- Standard accessories: stainless steel bowl, stainless steel wire whip, aluminum flat beater and aluminum dough hook
 - Gear driven
- | | | | |
|-------------|--------|--------|-------------------|
| PM10 | 10 qt. | 1/2 hp | \$859.00 |
| PM20 | 20 qt. | 1 hp | \$1,199.00 |



Presto! Slicers

- Adjustable slicing knob, ring guards
 - Built-in sharpeners, belt driven
- | | | | | |
|-------------|-----------|---------|--------|-----------------|
| PS10 | 10" Blade | Economy | 1/4 hp | \$379.00 |
| PS12 | 12" Blade | Economy | 1/3 hp | \$649.00 |
| P12D | 12" Blade | Deluxe | 1/2 hp | \$959.00 |

AXIS \$2,625

Axis Gear Slicer

- Polished aluminum
- Gear driven blade
- Built-in sharpener
- No holes or crevices to prevent the grease and other parts from going into the work of the slicer



AXS12G 12" Blade 1/2 hp

Axis Slicers

- For light-duty applications
 - Built-in sharpeners
 - Belt driven blades
 - Anodized aluminum
 - 120/60/1
- | | | | |
|--------------|--------|----------|----------------|
| AXM12 | 12 qt. | 1/2 hp | \$1,310 |
| AXM20 | 20 qt. | 1/2 hp | \$1,890 |
| AXM30 | 30 qt. | 1 hp | \$3,260 |
| AXM40 | 40 qt. | 1 1/2 hp | \$4,295 |
| AXM60 | 60 qt. | 3 hp | \$6,995 |



\$1,329

Axis Meat Grinders

- Energy-efficient motor and precision gear drives
 - Forward and reverse switches
- | | | | |
|---------------|---------|--------|-----------------|
| AXG12S | Hub #12 | 1.0 hp | \$450.00 |
| AXG22S | Hub #22 | 1.5 hp | \$575.00 |



Axis Premium Slicer

- Fully manufactured in anodized aluminum
 - Belt driven blade
 - Sharpener is easy to operate
- | | | | |
|---------------|-----------|--------|-----------------|
| AXS12P | 12" Blade | 1/2 hp | \$959.00 |
|---------------|-----------|--------|-----------------|



Knock Down Bun Pan Racks

- All 1" square aluminum frames
- Lifetime guarantee against rust
- Will accommodate 18" x 26" pans (3" spacing)
- Half size unit holds 9 pans, full size units hold 20 pans
- 5" dia. all swivel, non-marking polyurethane casters
- Shipped knocked-down
- NSF certified

425AKD Half Size \$99.00
401AKD Full Size \$125.00



\$199⁰⁰

Economy Bun Pan Rack

- All welded construction
- Lifetime guarantee against rust
- 5" dia. all swivel, non-marking polyurethane casters
- 3" spacing/20 pan capacity
- NSF certified

401AIC Full Size

\$159⁰⁰

Bus Box Cart

- All hell-arc welded tubular aluminum construction
- Rolls easily on all swivel casters
- Full 7" of clearance between bus boxes (boxes sold separately)
- Fully assembled and ready for use
- NSF certified

BBC3 3 Levels 41"H x 21 1/2"W x 18"D

Channel Dunnage Racks

- Channel style racks with aluminum construction
- Prolongs product life by circulating air underneath
- 12" height off the ground meets all sanitary health codes
- Each unit can hold up to 2,000 lbs.
- NSF certified

ADR2036 36"W x 20"D x 12"H \$60.00
ADR2048 48"W x 20"D x 12"H \$65.00
ADR2060 60"W x 20"D x 12"H \$75.00

Utility/Bussing Carts

- Three shelf carts designed as a mobile multi-purpose all-welded cart
- 500 lb. distributed weight capacity
- Rolls easily on all swivel 5" polyurethane casters
- Fully assembled and ready for use
- 18 gauge 304 series stainless steel construction
- Lifetime guarantee against rust and corrosion

US15243 32 1/4"H x 27 1/4"L x 16 1/2"W \$199.00
US18273 32 1/4"H x 31"L x 19"W \$229.00
US21353 37 1/4"H x 39 1/4"L x 22 1/2"W \$399.00

\$109⁰⁰

Bun Pan Dolly/Truck

- Heavy-duty, high tensile extruded aluminum 5" diameter, full swivel, non-marking casters
- Lifetime guarantee against rust
- NSF certified

BPD 7 1/2"H x 18 1/2" x 26 1/2"D

Tubular Dunnage Racks

- Tubular style aluminum construction
- Fully assembled and ready-for-use
- Each unit can hold up to 1,800 lbs.
- NSF certified

ADE2036 36"W x 20"D x 12"H \$60.00
ADE2048 48"W x 20"D x 12"H \$65.00
ADE2060 60"W x 20"D x 12"H \$69.00
ADE2436 36"W x 24"D x 12"H \$65.00
ADE2448 48"W x 24"D x 12"H \$69.00

\$23⁴⁹

ColdStik™ Refrigerator & Freezer Thermometer

- Simulates food product temperature in changing ambient conditions of any refrigerator, freezer, walk-in or delivery truck
- Stand or hang with two zip ties enclosed
- Waterproof
- NSF certified
- One year warranty

336-01 -40°F to 100°F/-40°C to 40°C



\$6⁴⁹

Pocket Test Thermometer

- Features a sheath design with a handy adjustment tool with anti-microbial additive
- 5" stainless steel stem with correct insertion depth mark
- NSF certified

1246-02 0°F to 220°F (± 2°)

\$32⁴⁹

Pocket Test Plus Digital Thermometer

- Waterproof digital pocket test thermometer
- Features a three station timer with clock and date features
- Replaces the typical wristwatch in the kitchen
- Accuracy: ±1°F/±0.5°C
- NSF certified, CE marked
- Accurate for life - guaranteed

TTM59 -4°F to 350°F/-20°C to 177°C

\$16⁴⁹

Digital Refrigerator/Freezer Thermometer

- With a large, easy-to-read display, it is designed to hang or stand within the food zone inside cold storage cabinets
- The unique ABS plastic frame design is removable for easy cleaning
- Both the thermometer and frame are splash-resistant and incorporate anti-microbial additive that helps to inhibit bacteria growth
- 200 day battery life (comes with low battery indicator)
- NSF certified, CE marked
- Accurate for life - guaranteed

2560 -22°F to 122°F/-30°C to 50°C

Waterproof Pen-Style Digital Pocket Thermometer

- Easy to read 1/4" high LCD display
- °F/°C selectable
- Automatic shut-off after 10 minutes
- Protective sheath included
- Accuracy: ±2°F/±1°C
- NSF certified, CE marked
- Accurate for life - guaranteed

DPP400W -40°F to 392°F/-40°C to 200°C

\$20⁹⁹

Waterproof Digital Pocket Thermometer

- The same innovative technology we use for our popular thermocouple instruments is now available in selected digital thermometers
- With settings stored in a non-volatile memory chip, "field adjustment" has become a thing of the past
- Dishwasher safe
- Accuracy: ±2°F/±1°C
- NSF certified, CE marked
- Accurate for life - guaranteed

DPP450W -40°F to 450°F/-40°C to 232°C

\$26⁹⁹

Antibacterial Probe Wipes

- Designed for singular use, these antibacterial probe wipes should be thrown away immediately after use
- Individually packaged in single-use foil packets
- Each wipe contains 70% isopropyl alcohol

9150-0-8 10 Boxes of 200 Wipes

\$74⁹⁹

NISSCO RDG

Elite™



\$79⁹⁹

NISSCO Elite™ #1 Style Can Opener

- Rust resistant stainless steel knife
- Extra knife in each retail package
- Extra-hard gear
- Nickel plated bar
- Added bar bushing for extended life and durability

99 Includes Base

DeLite™



NISSCO DeLite™ Flatware

- Heavyweight 18/0 flatware highly polished to a luxurious mirror finish
- Classic design is ideal for any tabletop setting
- Works with flatware anti-loss magnetic catching devices
- Sold per dozen

DEL29	Demitasse Spoon	dz.	\$7.50
DEL01	Teaspoon	dz.	\$8.99
DEL12	Bouillon Spoon	dz.	\$9.50
DEL04	Iced Teaspoon	dz.	\$9.50
DEL07	Dessert Spoon	dz.	\$11.50
DEL15	Cocktail Fork	dz.	\$8.50
DEL06	Salad Fork	dz.	\$8.99
DEL05	Dinner Fork	dz.	\$11.90
DEL051	Euro Fork	dz.	\$19.00
DEL11	Butter Knife	dz.	\$15.50
DEL45	Dinner Knife	dz.	\$17.99
DEL451	Euro Knife	dz.	\$21.99



\$1,109



Grill-Max® Hot Dog Roller Grill

- Stadium seating slanted roller design
- Slim-line design provides more grill surface in the same space
- Infinite temperature controls
- Easy access control knobs
- Duratec® coated non-stick rollers
- NEMA 5-15P/CEE7-7, 120/230V, 1150W
- CE, cUL, UL

30SC Up to 30 Hot Dogs

Grill-Max® Sneeze Guards

- Ultra clear plastic
- UL sanitation and safety approved
- Meets Health Department requirements

30SGID Fits 30 Series Roller Grills \$235.00
50SGID Fits 50 Series Roller Grills \$299.00

\$525⁰⁰

Hot Dog Steamer

- Removable sliding tempered glass doors provide easy access
- Powerful tubular immersion element for faster heat up

35SSA Holds 170 Hot Dogs/18 Buns

\$525⁰⁰

Classic Hot Dog Steamer

- Features top loading design
- Bun compartment features a humidity control system
- Adjustable thermostat
- Full view tempered glass
- 120V, 1000W, NSF, UL, CE

35SSC Holds 130 Hot Dogs/30-40 Buns

\$899⁰⁰



Grill-Max® Bun Warmer

- Includes removable stainless steel pan, cover and stainless steel bun rack
- Humidity control system and temperature ranges from 80°F to 200°F
- 120V, 450W, cUL

SST30 Holds Up To 48 Buns

Your Choice!

\$575⁰⁰



Grill Express® Two Sided Grills

- Heavy-duty cast iron platens, smooth or grooved
- Accurate cooking temperature with an adjustable thermostat from 175°F (79°C) to 550°F (302°C)
- Accommodates the flattest tortilla to a 3" sandwich
- A reliable hinge system for effortless operation and consistent application of pressure for ideal cooking performance

GX14IG Grooved
GX14IS Smooth

\$539⁰⁰

Holman QCS Compact Conveyor Toaster

- 14 1/4" of counter space, exclusive infrared convection and quartz infrared heater with variable speed control, power saver and high limit switch
- 120/220V, 60/50 Hz, 1600W
- UL, CUL, NSF, CE

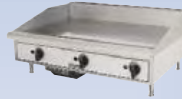
gcs1-350 350 Slices/hr.



JetStar® Popcorn Poppers

- Units will pop up to 135 (1 oz.) servings per hour
- 6 oz. nickel plated steel kettles enable 2 1/2 minute popping cycle
- NSF, UL, CSA

39A	19 1/2"W x 14 1/2"D x 25 1/2"H	Yellow Painted Top	\$745.00
39R-A	19 1/2"W x 14 1/2"D x 25 1/2"H	Antique Styling	\$749.00
39S-A	19 1/2"W x 14 1/2"D x 25 1/2"H	Stainless Steel Top	\$749.00
39D-A	21"W x 14 1/2"D x 25 1/2"H	Wood Grain	\$749.00



Gas Griddles

- Units are 15 1/2"H x 27 1/2"L
- cULus, UL Sanitation

Manual Controls

TMGM24	2 Controls	24"W	\$689.00
TMGM36	3 Controls	36"W	\$869.00
TMGM48	4 Controls	48"W	\$1,149.00

Thermostatic Controls

TMGT24	2 Controls	24"W	\$875.00
TMGT36	3 Controls	36"W	\$1,175.00
TMGT48	4 Controls	48"W	\$1,535.00

Gas Charbroilers

- Units are 15 1/2"H x 26 1/2"L
- cULus

Lava Rock

TMLC24	2 Controls	24"W	\$749.00
TMLC36	3 Controls	36"W	\$1,029.00
TMLC48	4 Controls	48"W	\$1,289.00

Radiant

TMRC24	2 Controls	24"W	\$749.00
TMRC36	3 Controls	36"W	\$1,025.00
TMRC48	4 Controls	48"W	\$1,289.00

\$1,875

Toastermaster® Non-Insulated Heater/Proofer

- Aluminum construction
- Mechanical controls, separate heat and humidity controls
- Full view lexan door, set of 5" swivel casters with brakes
- Universal pan slides with 3" spacing
- 6' detachable cord and plug

HPU17 Fits (34) 12" x 20", (17) 18" x 26" Pans



Toastermaster® Heaters/Proofer

- Welded aluminum construction
- Mechanical controls, full size lexan doors
- Set of 5" swivel casters with brakes
- 6' detachable cords and plugs

9451HP34CDN	Insulated	\$1,849
E9451HP34CDN	Non-Insulated	\$1,379



Wear-Ever® Non-Stick Fry Pans

- SteelCoat x3™ is the breakthrough non-stick coating that uses advanced new technology to bring you exceptional life, better food release, faster clean-up and lower replacement costs
- Triple-layer coating provides exceptional durability
- Bodies are manufactured from heavy-duty impact-resistant 3004 aluminum
- EverTite riveting system offers a lifetime warranty against loose rivets
- TriVent handles designed for comfort and durability
- Rated at 450°F for stovetop or oven use
- Silicone handles
- NSF certified

67607	7" Top dia., 4 1/2" Bottom dia., 8 GA	\$18.50
67608	8" Top dia., 5 1/2" Bottom dia., 10 GA	\$23.50
67610	10" Top dia., 7 1/2" Bottom dia., 8 GA	\$31.50
67612	12" Top dia., 9 1/2" Bottom dia., 8 GA	\$43.95
67614	14" Top dia., 10 1/2" Bottom dia., 6 GA	\$57.95



Wear-Ever® Natural Finish Fry Pans

- Constructed from heavy-duty impact resistant 3004 aluminum
- EverTite riveting system offers a lifetime warranty against loose rivets
- TriVent handles designed for comfort and durability
- Silicone handles
- NSF certified

67907	7" Top dia., 4 1/2" Bottom dia., 8 GA	\$11.95
67908	8" Top dia., 5 1/2" Bottom dia., 10 GA	\$14.95
67910	10" Top dia., 7 1/2" Bottom dia., 8 GA	\$19.95
67912	12" Top dia., 9 1/2" Bottom dia., 8 GA	\$29.95
67914	14" Top dia., 10 1/2" Bottom dia., 6 GA	\$41.95



Traex® Rack Max® Glass Racks

- 100% vertical glassware protection and fewer wash cycles add up to less glass breakage
- Faster drying time
- 17 - 30% greater rack capacity saves you time and energy
- Made in the USA
- NSF certified

TR11	20-Compt. Base Rack	\$25.95
TR11G	20-Compt. w/Extender	\$36.50
TR11A	20-Compt. w/1 Lip Extender	\$36.50
TR11GA	20-Compt. w/1 Extender & 1 Lip Extender	\$42.50
TR11GG	20-Compt. w/2 Extenders	\$41.50
TR11GAAG	20-Compt. w/4 Extenders	\$57.95
TR12	30-Compt. Base Rack	\$25.95
TR12A	30-Compt. w/1 Lip Extender	\$35.95
TR12AA	30-Compt. w/2 Extenders	\$43.50
TR12HHH	30-Compt. w/3 Extenders	\$53.95
TR12HHHH	30-Compt. Low Profile Base Rack w/4 Extenders	\$59.95



London Collection Dinnerware

- English style, wide rim
- Low profile, fully glazed foot
- Five year chip warranty on flat items only
- Priced per dozen, sold by case

LD1	Cup	7 oz.	\$57.00
LD2	Saucer	6"	\$40.00
LD11	Fruit Bowl	8 oz., 5 1/2"	\$45.00
LD3	Pasta Bowl	9"	\$72.00
LD6	Plate	6 1/2"	\$49.00
LD8	Plate	9"	\$80.00
LD13	Oval Platter	11"	\$123.00
LDTP	Tea Pot	13 1/2 oz.	\$209.00

**The Entire London Collection
ON SALE NOW!**



Sani-Safe® Cutlery

- Quality, stain-free, high carbon steel with ultimate edges, hand ground and honed
- High impact Grip-Tex handle is polypropylene textured and formed for slip-resistant grip, safety and tough use
- Impervious seal of blade and handle
- Handles will withstand high and low temperatures
- Easily cleaned, NSF
- White handles: *available in Blue, Green, Purple, Red, Tan or Yellow at a slightly higher price

15303*	3 1/2" Cook's Style Parer	\$4.99
15373	3 1/2" Scalloped Cook's Style Parer	\$4.49
01563*	6" Narrow Boning Knife	\$14.29
13303	6" Scalloped Utility Knife	\$10.99
13483	8" Scalloped Utility Slicer	\$13.49
13313	8" Scalloped Bread Knife	\$13.59
12443*	8" Cook's Knife	\$22.99
12433*	10" Cook's Knife	\$25.49
13583	9" Scalloped Offset Sandwich Knife	\$14.49
13473	12" Duo-Edge Roast Slicer	\$27.99
14443	13" Cook's Fork	\$15.99

\$29⁹⁹



SofGrip™ Santoku Style Duo-Edge Chef's Knife

- Stain-free, high-carbon steel with duo-edge for ultra thin slicing
- Curved blade for smooth rocking motion during cutting
- Black handle, NSF

24503B 7"

\$29⁹⁹



Dexter-Russell® Diamond Sharpener

- Electroplated diamond dust sharpener

07633 12"



M3 Series Reach-Ins

- 400 stainless steel fronts and sides, 300 series stainless steel floors and ceilings with coated aluminum sides, door liners and incandescent interior lighting
- Digital temperature control systems
- Diagnostic defrost systems
- Self-contained systems
- Digital temperature displays
- 4" diameter casters
- NSF listed

Refrigerators: (33°F to 38°F)

M3R241	1 Door/3 Shelves, 24 cu. ft.	28 3/4" L x 30 1/4" D x 78" H	1/4 hp	\$1,799
M3R472	2 Doors/6 Shelves, 47 cu. ft.	51 3/4" L x 30 1/4" D x 78" H	1/3 hp	\$2,629
M3R723	3 Doors/9 Shelves, 72 cu. ft.	77 3/4" L x 30 1/4" D x 78" H	1/2 hp	\$3,659

Freezers: (-10°F to 5°F)

M3F241	1 Door/3 Shelves, 24 cu. ft.	28 3/4" L x 30 1/4" D x 78" H	1/2 hp	\$2,319
M3F472	2 Doors/6 Shelves, 47 cu. ft.	51 3/4" L x 30 1/4" D x 78" H	3/4 hp	\$3,319
M3F723	3 Doors/9 Shelves, 72 cu. ft.	77 3/4" L x 30 1/4" D x 78" H	1 1/4 hp	\$4,549

Super Deluxe Series Reach-Ins

- Oversized and balanced CFC-free refrigeration systems (R-134A used for refrigerators and R-404A used for freezers)
- Digital temperature control systems provide precise and constant temperature
- High-tech monitors digitally display the present temperature and current status
- Adjustable thermostats
- Stainless steel interiors and exteriors
- Stainless steel wire shelves
- Foamed-in-place, high density, CFC-free polyurethane insulation
- Bottom mount compressors
- Incandescent interior lighting
- Door locks and 4" swivel casters
- Self-contained systems
- Warranty: two year parts and labor/five year compressor

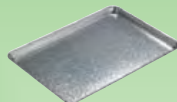


Refrigerators: (33°F to 38°F)

TSR23SD	1 Door/3 Shelves, 23 cu. ft.	27" L x 30 1/4" D x 78 1/4" H	1/4 hp	\$2,029
TSR35SD	2 Doors/6 Shelves, 35 cu. ft.	39 1/4" L x 30 1/4" D x 78 1/4" H	1/3 hp	\$2,679
TSR49SD	2 Doors/6 Shelves, 49 cu. ft.	54 1/4" L x 30 1/4" D x 78 1/4" H	1/3 hp	\$2,979
TSR72SD	3 Doors/9 Shelves, 72 cu. ft.	81 1/4" L x 30 1/4" D x 78 1/4" H	1/2 hp	\$4,149

Freezers: (-10°F to 0°F)

TSF23SD	1 Door/3 Shelves, 23 cu. ft.	27" L x 30 1/4" D x 78 1/4" H	1/2 hp	\$2,629
TSF35SD	2 Doors/6 Shelves, 35 cu. ft.	39 1/4" L x 30 1/4" D x 78 1/4" H	3/4 hp	\$3,379
TSF49SD	2 Doors/6 Shelves, 49 cu. ft.	54 1/4" L x 30 1/4" D x 78 1/4" H	3/4 hp	\$3,759
TSF72SD	3 Doors/9 Shelves, 72 cu. ft.	81 1/4" L x 30 1/4" D x 78 1/4" H	1 1/4 hp	\$5,159



Display Trays

- Textured surface
 - Silver anodized finish
- | | | |
|-------------------|----------------|----------------|
| 90DT1318SV | 13" x 18" x 1" | \$13.75 |
| | Half Size | |
| 90DT1826SV | 18" x 26" x 1" | \$21.95 |
| | Full Size | |

Sheet Pans

- Made from aluminum steel for superior strength and even heat distribution
- | | | |
|------------------|------------------|----------------|
| Non-Stick | | |
| 900854 | 13" x 18" x 1" | \$11.95 |
| | Half Size, 18 GA | |
| Natural | | |
| 900600 | 18" x 26" x 1" | \$18.95 |
| | Full Size, 12 GA | |



Coffee Urns

- Polished aluminum
 - Non-drip faucets, stay-cool phenolic handles and knobs, signal light that indicates when coffee is finished brewing
 - Made in the USA, cULus and NSF approved
- | | | |
|---------------|-------------------------|-----------------|
| 58230R | 30 Cups (Black Accents) | \$69.00 |
| 58055R | 55 Cups | \$125.00 |
| 58001R | 101 Cups | \$139.00 |

Plastic Sheet Pan Covers

- Keeps contents sanitary
- Fits most standard aluminum sheet and display pans
- Dishwasher safe polypropylene construction
- Not for use in ovens or with hot pans
- Fit is not air-tight

90PSPCQT	Quarter Size	\$3.95
90PSPCHF	Half Size	\$5.95
90PSPCFL	Full Size	\$9.50



Wire Shelf Utility Carts

- Three shelf carts
- Shelves can be adjusted in 1" (2.5 cm) increments
- Units include 4" (10.8 cm) non-marking, industrial casters with rubber bumpers
- Shipped knocked down



FFC18363C	18" x 36" x 37"	\$129.00
FFC24363CH	24" x 36" x 37"	\$145.00

Security Modules - Chromate Finish

- Converts 18" x 48" and 24" x 48" shelving units into a security module
- Fits between shelving spaced 20" apart on almost all shelving units
- Modules include side panels, back panels, doors and mounting hardware
- Shelves, posts and locks not included
- NSF certified



FSEC11848CH	18" x 48" x 20"	\$125.00
FSEC2448CH	24" x 48" x 20"	\$130.00